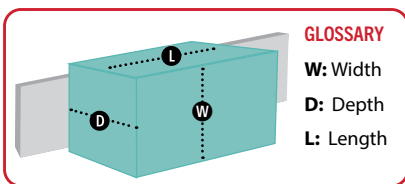


FERNO® **iN/TRAxx**™
Integrated Vehicle Component System

Components Guide 2026/27



All dimensions provided in the specification tables follow the length, width, and depth definitions shown in the diagram.



No part of this publication may be reproduced or transmitted in any format without FERNO's prior written consent.

We go to great lengths to ensure the accuracy of the information provided, including spelling, measurements, and photography. However, unintentional oversights or errors may occur, and in such instances we ask for your understanding should any inaccuracies be identified.

In some cases, images shown are representative and for illustrative purposes only and may not depict the exact product supplied.

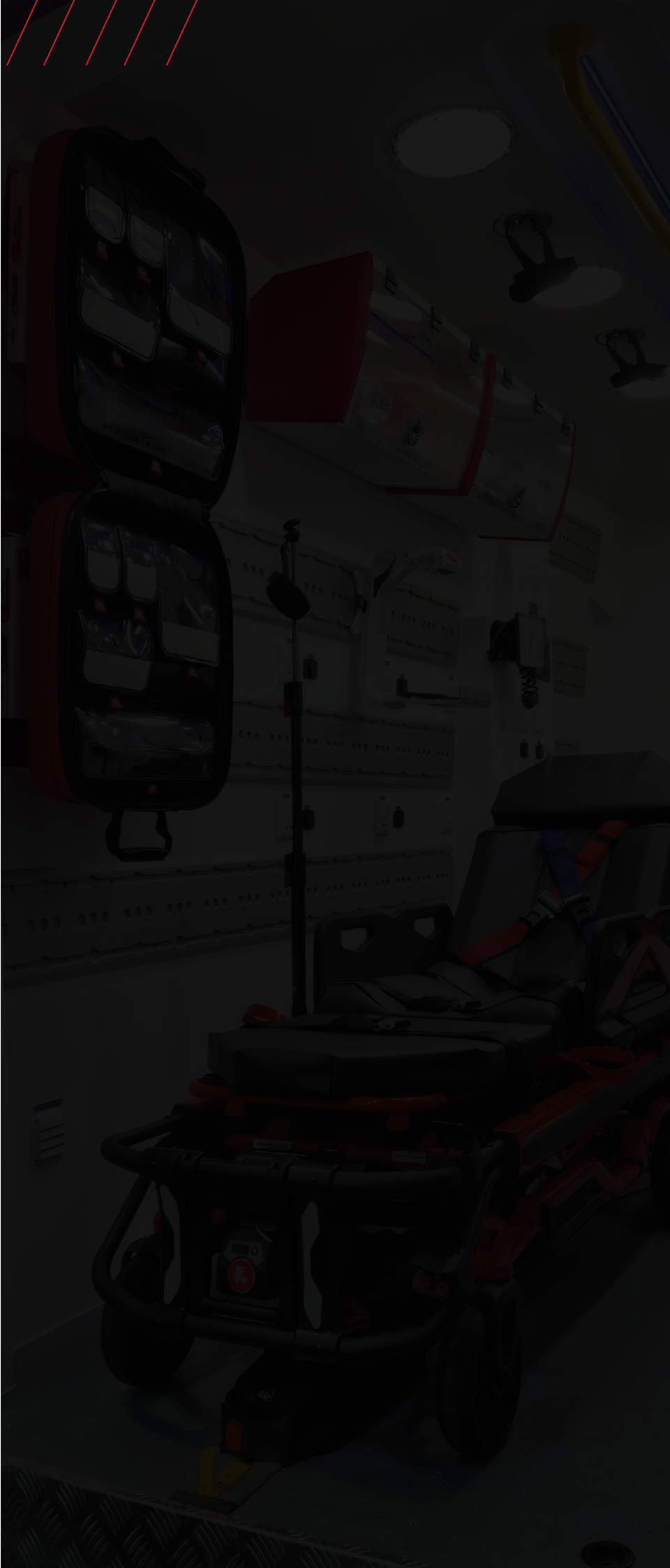
Measurements, specifications, and product availability may vary by region and are subject to local standards and requirements.

Colors and finishes may vary due to manufacturing processes or printing limitations. E&OE.

For further information, please contact FERNO Customer Relations or your authorized FERNO distributor. FERNO reserves the right to change product specifications, designs, or materials without prior notice.

© FERNO 2026. All rights reserved.

FERNO is a trademark of Ferno-Washington Inc. All other trademarks are the property of their respective owners.





Mission

To put heroes first by delivering innovative, high-quality products that can be relied on around the world.



Vision

To be the world's leading expert for emergency and rescue product solutions that heroes trust most.



Values

Passion. Integrity. Respect. Excellence.

EMERGENCY

- Patient handling solutions
- Immobilization products
- Advanced vehicle systems
- Associated EMS products

RESCUE

- Basket stretchers
- Rope rescue
- Water rescue
- Confined space rescue

MORTUARY

- First call stretchers
- Preparation tables
- Church trucks

MILITARY

- Vehicle mounting systems
- Casualty evacuation
- Oxygen systems

AVIATION

- Patient handling systems
- Vehicle mounting systems

Established

1955

Operating Countries

9

Team Members

500+

Serviced Countries

140+

Live Products

1,000+

Global Customers

4,500+

For more than 70 years, FERNO has stood beside those who answer the call when it matters most. Built on a proud heritage of innovation and excellence, our solutions are designed For Heroes. For Life. and trusted worldwide.

From essential, high-quality equipment to industry-leading, advanced powered solutions, every FERNO product is shaped by real-world feedback from professionals who perform under pressure. Continuous feedback drives constant improvement, resulting in an unrivaled range defined by proven quality, deep engineering expertise, and commitment to those who rely on their equipment every day.

Creating a better place is central to our legacy, and we remain proud of our mission to serve front-line heroes through the products and services we deliver.



IN/TRAXX™

Delivering exceptional patient care inside a moving vehicle is a challenge every emergency responder understands. FERNO designs solutions that protect caregivers, support optimal patient outcomes, and elevate safety in the dynamic ambulance environment.

At the core of this commitment is the innovative iNTRAXX™ Integrated Vehicle Component System. iNTRAXX is a modular, wall or bench-mounted track system that secures loose equipment and enables medics to administer care from a seated, restrained, and significantly safer position. By keeping both caregivers and equipment secured, iNTRAXX reduces the risk of death or injury during crashes, sudden stops, or hard maneuvers.

The system incorporates iNTRAXX tracks, equipment mounts, storage cabinets, packs and pouches plus workflow accessories - all designed to lock into place for stability while in transit and unlock for quick portability. iNTRAXX modularity not only enhances safety and workflow efficiency but also strengthens inventory management and helps reduce operating costs.

Each component can be configured to align with specific vehicle layouts and operational workflows, optimizing safety and enabling seamless patient care on the move.

iNTRAXX SAFETY FORMULA



THE POWER OF iNTRAXX

ENGINEERED FOR SAFETY. DESIGNED FOR THE FUTURE.

CRASH-TESTED SAFETY

CRASH-READY PERFORMANCE

iNTRAXX components are dynamically crash-tested to international safety standards, securing equipment through 26G impacts.

Access supplies and deliver patient care without standing in a moving vehicle to dramatically reduce injury risk during sudden stops or evasive maneuvers.

IMPROVED FLEXIBILITY

INTEROPERABILITY ACROSS FLEETS

Supplies and equipment move more easily between vehicles and vehicle types, simplifying logistics

MISSION-SPECIFIC CONFIGURATION

Reposition or remove components to instantly adapt for unique response scenarios such as viral outbreaks, mass casualty incidents, or specialty missions.

EXPANDABLE BY DESIGN

Add components as needs evolve. Scale without replacing your entire system.

REDUCED PROCESSING TIME AND MAINTENANCE

FASTER TURNAROUND

iNCASE bags and SafePouches detach in seconds for quick cleaning and rapid restocking, getting vehicles back in service sooner.

MINIMIZED DOWNTIME

Replace damaged or out-of-service equipment without taking the vehicle offline. iNTRAXX keeps your fleet moving.

REDUCED SYSTEM WASTE

BETTER INVENTORY VISIBILITY

Clear, organized SafePouches and iNCAB cabinets simplify stock checks, reducing duplication, over-ordering, and expired consumables.

IMPROVED ERGONOMICS

SUPPLIES WHERE YOU WANT THEM

Modularity lets you position equipment immediately beside the paramedic's seated, restrained working position. No more standing in a moving ambulance.

CONFIGURABLE FOR EVERY PROVIDER

Quickly and easily adjust layout to match personal preferences, shift requirements or operational needs.

IMPROVED INFECTION CONTROL

EASY CLEANING AND DECONTAMINATION

All components are fully removable and power-washable for thorough and efficient cleaning.

BUILT-IN CONTAINMENT

Individual storage pouches enable organized storage of consumables and equipment for quick and efficient access. This feature also compartmentalizes and reduces cross-contamination, protecting high-value supplies.

REDUCED COST OF OWNERSHIP

SPACE-SAVING EFFICIENCY

The compact iNTRAXX system reduces storage footprint, enabling the use of smaller more cost-effective vehicles without compromising capability.



IN/TRAXX

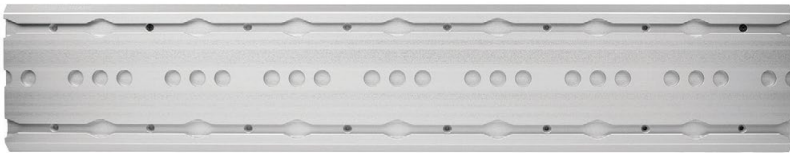
TRACKS AND CAPS

Tracks form the core of the iNTRAXX System, delivering an SAE-compliant platform that makes vehicle customization simple and scalable.

With multiple track profiles available for walls, ceilings, and bench top installations, you can start small – adding only what you need – or integrate tracks throughout the entire vehicle to unlock the system’s full capability.

Engineered from anodized extruded aluminum, each track features two parallel load-bearing channels with integrated drop-zones, locking points, and built-in fluid-drainage functionality.

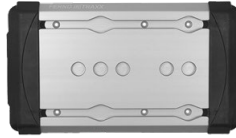
The result is a durable adaptable mounting solution designed for demanding mobile environments.



0480001 - TRACK 1016



SPLICING KEYS AND SET SCREWS ARE PROVIDED WITH EVERY TRACK



0480062 - 340 SHORT TRACK

TRACK - 1016

This is the most commonly used track for wall and bench applications. The track can be cut to size (additional cost)

TRACK - 340mm WITH END CAPS

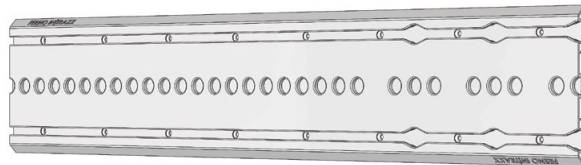
This short track is commonly used for mounting single pieces of equipment and is supplied with black end caps. Suitable for wall and bench top applications.



0480073 - TRACK NO HOLES

TRACK - 1016 NO HOLES (BONDING)

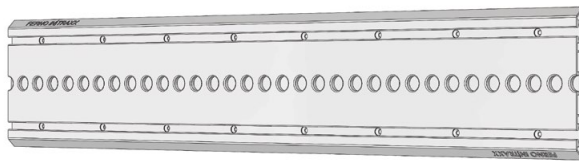
This track is supplied without screw holes and is designed to be bonded directly to the mounting surface. The installer is solely responsible for selecting an appropriate bonding method. Suitable for wall, ceiling, and bench top applications.



0480107 - TRACK LEFT/RIGHT DROP IN

TRACK - 1016 LEFT/RIGHT DROP IN

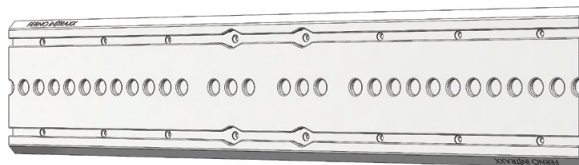
Features a single drop-in zone at one end of the track, which can be oriented left or right during installation. Suitable for wall, ceiling, and bench top mounting.



0480108 - TRACK, BLANK

TRACK - 1016 BLANK

Designed without a drop-in zone, this track is used to join with other track sections to extend the travel distance of mounted equipment. Suitable for wall, ceiling and bench top mounting.



0480171 - TRACK, CENTRE DROP-IN

TRACK - 1016 CENTER DROP-IN

Includes a centrally located drop-in zone, providing greater flexibility when planning vehicle or ambulance layouts. Suitable for wall, ceiling, and bench top mounting.

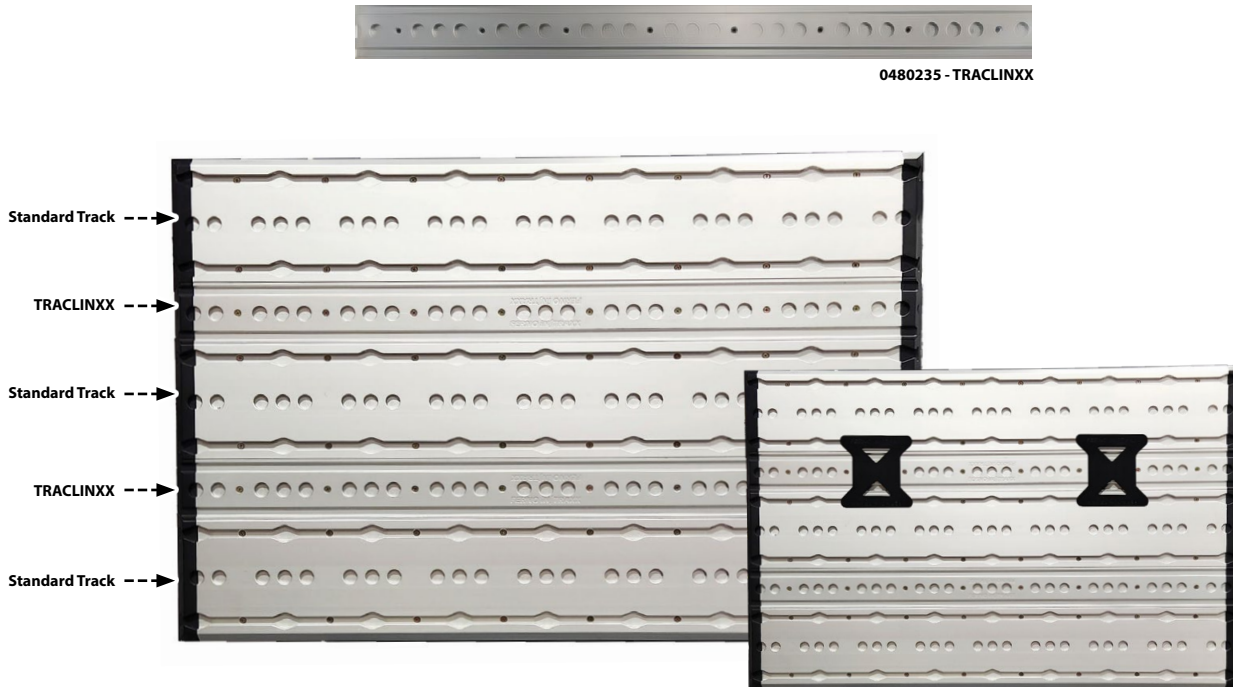
EXAMPLE USE: The 0480107 / 0480108 / 0480171 tracks have extra location holes allowing more flexible equipment placement. These track options are ideal where equipment needs to be repositioned quickly over longer distances without removal, particularly in vertical or ceiling-mounted installations.

SPECIFICATIONS

PART #	PRODUCT	METRIC (MM)			IMPERIAL (IN)			WEIGHT		LOAD CAPACITY		CRASH-TESTED		
		L	W	D	L	W	D	KG	LB	KG	LB	10G	22G	26G
0480001	TRACK - 1016, STANDARD	1016	189	12.7	40	7.4	0.5	3.4	7.5	100	220.5	●	●	●
0480062	TRACK - 340, END CAPS	340	193	17	13.4	7.6	0.7	1.2	2.6	25	55.1	●	●	●
0480073	TRACK - 1016, NO HOLES	1016	189	12.7	40	7.4	0.5	3.4	7.5	100	220.5	●	●	●
0480107	TRACK - 1016, L/R DROP-IN	1016	189	12.7	40	7.4	0.5	3.4	7.5	100	220.5	●	●	●
0480108	TRACK - 1016, BLANK	1016	189	12.7	40	7.4	0.5	3.4	7.5	100	220.5	●	●	●
0480171	TRACK - 1016, CENTER DROP-IN	1016	189	12.7	40	7.4	0.5	3.4	7.5	100	220.5	●	●	●
0480235	TRACLINXX - 1016	1016	87.5	12.7	40	3.4	0.5	1.5	3.3	100	220.5	●	●	●

TRACLINXX

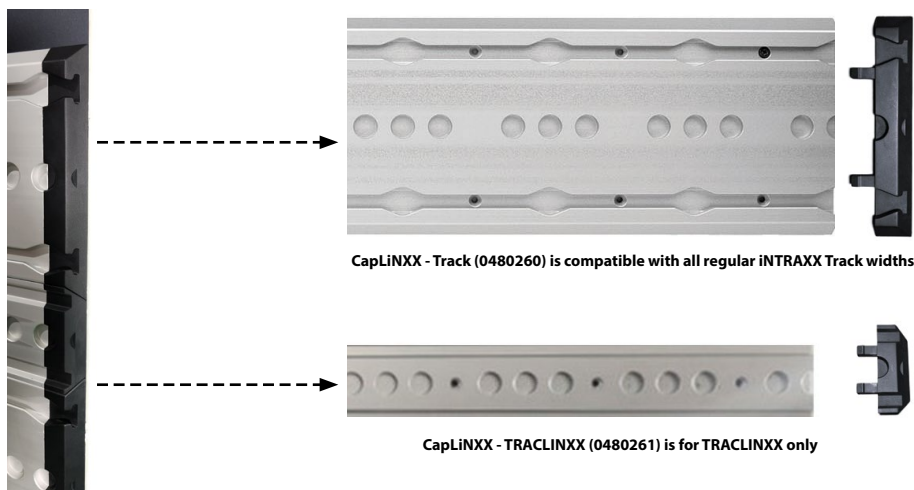
TRACLINXX acts as a spacer between two standard-width iNTRAXX tracks, linking upper and lower tracks into a continuous mounting surface to enable precise positioning of equipment where it's needed. TRACLINXX is compatible with all iNTRAXX tracks, with optimal usability when paired with the standard track (0480001).



Templates help ensure proper horizontal alignment of tracks during installation and are provided with TRACLINXX orders.

TRACLINXX FEATURES

- Two recessed channels running the length of TRACLINXX can accommodate LED light strips, if desired
- Easy to clean and decontaminate
- Is compatible with all iNTRAXX track profiles
- Best performance is achieved when TRACLINXX is paired with the Standard Track (0480001)
- A Template Kit (0480293) is recommended to assist with track installation and provided with TRACLINXX orders. It includes two templates that help ensure proper horizontal alignment of tracks, allowing attached equipment to move smoothly along the iNTRAXX wall. Alternatively, two SafeMounts can be used.
- The track ends of an iNTRAXX walls featuring TRACLINXX are capped off with CapLiNXX caps (below and page 10).



CapLiNXX - Track (0480260) is compatible with all regular iNTRAXX Track widths

CapLiNXX - TRACLINXX (0480261) is for TRACLINXX only

TRACKS & CAPS

END CAPS are used to close off the end of a track and can be removed if the track needs to be extended.



END CAPS - REGULAR

Regular end caps are available in black (0480002) or grey (0480003).



END CAPS - THIN

Thin end caps are useful when tracks end close to a wall or where equipment mounts are to be attached from the track end.



T-SPLICE CAPS

T-Splice caps are used where a horizontal and a vertical track meet.

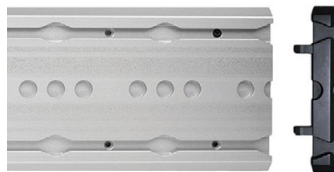


CAPLINXX

CapLiNXX delivers a sleek end-of-track finish and is easy to install. Its unique low-profile design lets you insert or remove mounts directly from the track end - no drop-in zones needed.

Reusable, hygienic, and fully compatible with all iNTRAXX tracks, the all-new CapLiNXX is available in two sizes:

- For standard width tracks (0840260)
- For the narrower width TRACLINXX track (0480261)



CAPLINXX FOR TRACK (REGULAR WIDTH)



CAPLINXX FOR TRACLINXX (NARROWER WIDTH)

SPECIFICATIONS

PART #	PRODUCT	METRIC (MM)			IMPERIAL (IN)			WEIGHT		LOAD CAPACITY		CRASH-TESTED		
		L	W	D	L	W	D	KG	LB	KG	LB	10G	22G	26G
0480002	END CAP REGULAR - BLACK	48	193	17	1.9	7.6	0.7	0.062	0.1	N/A	N/A	•	•	•
0480003	END CAP REGULAR - GREY	48	193	17	1.9	7.6	0.7	0.062	0.1	N/A	N/A	•	•	•
0480005	T SPLICE CAP - BLACK	49	193	16	1.9	7.6	0.6	0.036	0.1	N/A	N/A	•	•	•
0480006	T SPLICE CAP - GREY	49	193	16	1.9	7.6	0.6	0.036	0.1	N/A	N/A	•	•	•
0480049	END CAP THIN - BLACK	3.7	189	12.7	0.1	7.4	0.5	0.01	0	N/A	N/A	•	•	•
0480050	END CAP THIN - GREY	3.7	189	12.7	0.1	7.4	0.5	0.01	0	N/A	N/A	•	•	•
0480260	CAPLINXX FOR TRACK	31	189	12.7	1.2	7.4	0.5	0.034	0.1	N/A	N/A	•	•	•
0480261	CAPLINXX FOR TRACLINXX	31	87	12.7	1.2	3.4	0.5	0.016	0	N/A	N/A	•	•	•



IN/TRAXX

STORAGE SOLUTIONS

Engineered for precision and tested to 26G, INTRAXX storage options mount directly to the track system letting you position every item exactly where you need it.

Clear windows and soft-sided designs enhance safety and rapid content identification, improving workflow efficiency and controlling inventory.

Three main storage types complement and seamlessly integrate to create a modular, efficient storage system.

- **SAFEPOUCHES** — individual pouches with clear flap enclosures plus a pocket for custom labels.
- **INCASE PORTABLE STORAGE** — a semi-rigid bag lined with pouch mounts which secure SafePouches inside.
- **iNCAB CABINETS** — an innovative modular storage cabinet system that mounts direct to wall tracks and are expandable by joining two or more iNCABs together.

SAFEPOUCHES



SafePouches are individually designed storage pouches featuring clear flap enclosures and a dedicated pocket for customized labels, allowing easy identification of each pouch and its contents.

Their advanced, one-motion latching system allows pouches to attach or release from tracks, walls, and iNCASE interiors with smooth, intuitive ease.

Available in a wide range of sizes and two depths, SafePouches integrate seamlessly:

- Inside iNCASE bags
- Secure onto wall tracks using pouch mounts
- Secure direct to a wall without tracks using pouch mount plates.

STANDARD SAFEPOUCHES



JUMBO SAFEPOUCHES

JUMBO SafePouches offer an additional 50 mm of depth compared to standard SafePouches, providing generous space for bulkier items and extending your storage versatility. Their increased capacity makes them ideal for organizing larger equipment more easily. To ensure optimal stability and performance, Jumbo SafePouches are best mounted to wall tracks using Pouch Track Mounts or to walls with Pouch Mount Plates.



SPECIFICATIONS

PART #	PRODUCT	METRIC (MM)			IMPERIAL (IN)			WEIGHT		LOAD CAPACITY		CRASH-TESTED		
		L	W	D	L	W	D	KG	LB	KG	LB	10G	22G	26G
0480026	SAFEPOUCH - SMALL	100	120	70	3.9	4.7	2.8	0.136	0.3	0.23	0.5	•	•	•
0480027	SAFEPOUCH - MED	200	120	70	7.9	4.7	2.8	0.25	0.6	1.13	2.5	•	•	•
0480028	SAFEPOUCH - LARGE VERT	200	260	70	7.9	10.2	2.8	0.4	0.9	2.04	4.5	•	•	•
0480029	SAFEPOUCH - LARGE HORZ	400	120	70	15.7	4.7	2.8	0.4	0.9	2.04	4.5	•	•	•
0480173	POUCH - JUMBO SMALL	100	120	120	3.9	4.7	4.7	0.16	0.4	0.23	0.5	•	•	•
0480174	POUCH - JUMBO MED	200	120	120	7.9	4.7	4.7	0.25	0.6	1.13	2.5	•	•	•
0480175	POUCH - JUMBO LARGE VERT	200	260	120	7.9	10.2	4.7	0.47	1	2.04	4.5	•	•	•
0480176	POUCH - JUMBO DUAL LARGE VERT	400	260	120	15.7	10.2	4.7	0.85	1.9	4	8.8	•	•	•

SAFEPOUCH KITS

SafePouch Kits are curated sets of individual pouches designed for use with the new iNCASE and older style SafePaks, or for mounting on vehicle walls. Each kit features a selection of the most popular Standard pouches, grouped into the three most commonly requested combinations. Pouch Kits offer cost savings when compared to purchasing pouches individually.

POUCH KIT 1



POUCH KIT 2



POUCH KIT 3



0480294 - POUCH KIT 1	QTY
STANDARD SMALL	4
STANDARD MEDIUM	2
STANDARD LARGE VERTICAL	2
STANDARD LARGE HORIZONTAL	2

0480295 - POUCH KIT 2	QTY
STANDARD MEDIUM	4
STANDARD LARGE VERTICAL	2
STANDARD LARGE HORIZONTAL	2

0480296 - POUCH KIT 3	QTY
STANDARD LARGE VERTICAL	4
STANDARD LARGE HORIZONTAL	2

SAFEPOUCH MEDIUM MESH



The medium mesh SafePouch features an elasticated throat opening that allows convenient, one-handed access to its contents. Because of this flexible opening, items stored in the mesh pouch are not crash-test rated. Each pack contains two pouches. The BVM shown in the image is for illustrative purposes only and is not included.

SAFEPOUCH DIVIDER



The Divider is designed for use with medium and large pouches, allowing you to create smaller sections or dedicated compartments within a single pouch. Each pack includes eight dividers.

LEDGE WITH STRAPS



The Ledge is a platform-style bracket with integrated straps that attaches to iNTRAXX wall tracks via a Multi-Mount. It provides a stable platform for securing soft packs and bags, supporting the load while straps keep items firmly in place.

SPECIFICATIONS

PART #	PRODUCT	METRIC (MM)			IMPERIAL (IN)			WEIGHT		LOAD CAPACITY		CRASH-TESTED		
		L	W	D	L	W	D	KG	LB	KG	LB	10G	22G	26G
0480072	POUCH DIVIDERS (8 PK)	40	99	64.8	1.6	3.9	2.6	0.1	0.2	N/A	N/A	N/A	N/A	N/A
0480092	POUCH MESH - MED (2 PK)	200	120	101.6	7.9	4.7	4	0.197	0.4	1.13	2.5	NO	NO	NO
0480294	POUCH KIT 1							2.6	5.7	11.3	24.9	•	•	•
0480295	POUCH KIT 2							2.6	5.7	12.7	28	•	•	•
0480295	POUCH KIT 3							2.4	5.3	12.2	26.9	•	•	•
0480204	LEDGE WITH STRAPS	250	104	104	9.8	4.1	4.1	0.4	0.9	8	17.6	•	•	•

SAFEPOUCH MOUNTING OPTIONS

SafePouches can be secured:

1. Inside **iNCASE** bags
2. Secure onto wall tracks using **POUCH TRACK MOUNTS**
3. Secure direct to a wall without tracks using **POUCH MOUNT PLATES**.



iNCASE



Heavy-duty zip with glove-friendly pulls



Interlocking rubberized handles for easy carrying

The **iNCASE** is a semi-rigid case designed with integrated pouch mount carriers to securely hold SafePouches inside the case. Strong yet lighter than its predecessor, the **iNCASE** is a streamlined upgrade from the original SafePak.

Contents remain visible and easily accessible while the case is mounted on a vehicle wall, but can be quickly removed for use in the field. The **iNCASE** and SafePouch system is ideal for “make-ready” or swap-n-go restocking methods to efficiently resupply vehicles.

- Semi-rigid casing is softer and safer in the event of a head strike during an accident
- User-friendly rubberized handles lock together for easy carrying
- Heavy-duty zip with glove-friendly pulls
- Easy to clean and decontaminate
- Supplied as requested without pre-configured pouches
- Pouches and Pouch Kits are sold separately to suit your specific needs

QUICK REFERENCES

- For pouch kits and individual pouches, refer to page 10–11
- For options to mount **iNCASE** to tracks, refer to page 15



Configure **iNCASE** with your preferred SafePouch layout

SPECIFICATIONS

PART #	PRODUCT	METRIC (MM)			IMPERIAL (IN)			WEIGHT		LOAD CAPACITY		CRASH-TESTED		
		L	W	D	L	W	D	KG	LB	KG	LB	10G	22G	26G
0480252	iNCASE BAG	455	467	252	17.9	18.4	9.9	4.9	10.8	12	26.5	•	•	•

POUCH TRACK MOUNTS

SafePouches securely attach to Pouch Track Mounts, which can be positioned anywhere along the iNTRAXX track system, providing crash-tested protection for all stored supplies.

POUCH MOUNT CARRIER - SINGLE

Pouch Mount Carriers form an integral part of the latching system to secure SafePouches. The carriers are used on all SafePouch mounting solutions.

POUCH TRACK MOUNT - SINGLE

Pouch Track Mount capacity:

- 2 Small pouches OR
- 1 Medium pouch

POUCH TRACK MOUNT - DOUBLE VERTICAL

Pouch Track Mount capacity:

- 2 Medium pouches OR
- 1 Large Vertical pouch OR
- 4 Small pouches

POUCH TRACK MOUNT - DOUBLE HORIZONTAL

Pouch Track Mount capacity:

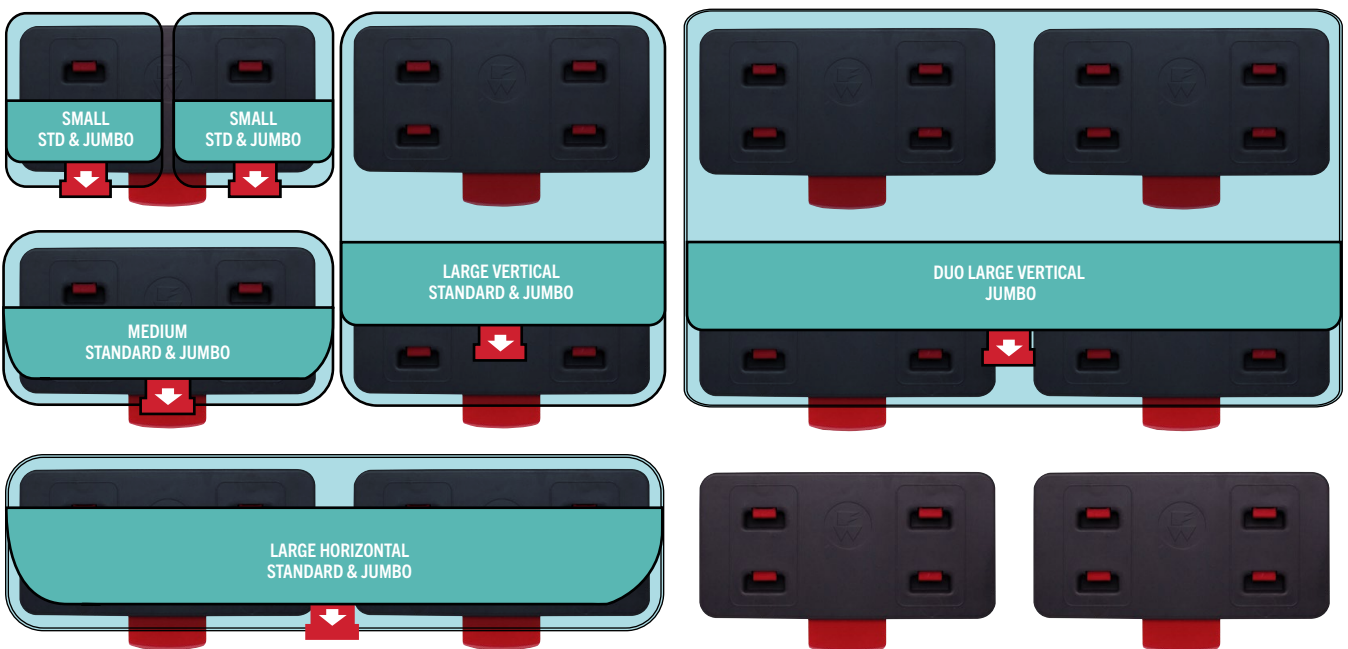
- 2 Medium pouches OR
- 1 Large Horizontal OR
- 4 Small pouches



SPECIFICATIONS

PART #	PRODUCT	METRIC (MM)			IMPERIAL (IN)			WEIGHT		LOAD CAPACITY		CRASH-TESTED		
		L	W	D	L	W	D	KG	LB	KG	LB	10G	22G	26G
0480030	POUCH MOUNT CARRIER - SGL	190	118	15	7.5	4.6	0.6	0.106	0.2	2.44	5.4	•	•	•
0480031	POUCH TRACK MOUNT - SGL	290	125	54	11.4	4.9	2.1	0.73	1.6	2.44	5.4	•	•	•
0480032	POUCH TRACK MOUNT - DOUBLE VERTICAL	290	268	54	11.4	10.6	2.1	1.23	2.7	2.44	5.4	•	•	•
0480083	POUCH TRACK MOUNT - DOUBLE HORIZONTAL	545	125	54	21.5	4.9	2.1	1.14	2.5	2.44	5.4	•	•	•

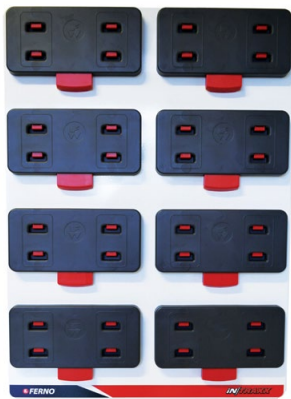
READY REFERENCE: SAFEPOUCH MOUNT REQUIREMENTS



POUCH MOUNT PLATES

Pouch Mount Plates provide a simple alternative for securing SafePouches to vertical surfaces without the need for iNTRAXX tracks. Designed for direct installation onto vehicle walls, they are available in multiple sizes to suit different spaces and layout preferences. Their low-profile construction makes them ideal for confined areas, and they are lightweight, easy to clean, and straightforward to decontaminate.

POUCH MOUNT PLATE - 4T2



POUCH MOUNT PLATE - 3T2



POUCH MOUNT PLATE - 2T2



POUCH MOUNT PLATE - 1T2



TRACK ADAPTER - POUCH MOUNT PLATE

The Track Adapter allows Pouch Mount Plates to be attached to an iNTRAXX track rather than directly to the vehicle wall. It provides added flexibility in positioning, giving you more options for height and placement when configuring vehicle storage.



The compact, modular design [of iNTRAXX] meant we could move from a Type III (box style) to a Type II (van style) vehicle because of the space savings.

BARRY HURD, CHIEF OF AMBULANCE SERVICES
OAK VALLEY DISTRICT HOSPITAL, USA



SPECIFICATIONS

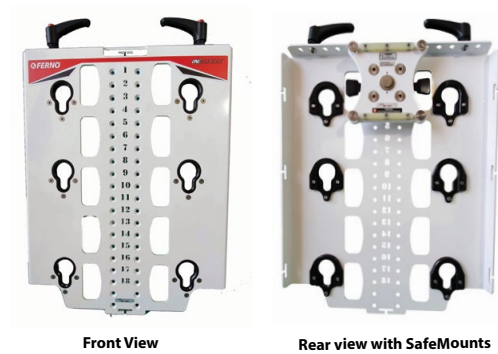
PART #	PRODUCT	METRIC (MM)			IMPERIAL (IN)			WEIGHT		LOAD CAPACITY		CRASH-TESTED		
		L	W	D	L	W	D	KG	LB	KG	LB	10G	22G	26G
0480160	POUCH MOUNT PLATE - 4T2	416	588	28.5	16.4	23.1	1.1	2.46	5.4	12.4	27.3	•	•	•
0480155	POUCH MOUNT PLATE - 3T2	416	453	28.5	16.4	17.8	1.1	1.9	4.2	8.5	18.7	•	•	•
0480161	POUCH MOUNT PLATE - 2T2	416	298	28.5	16.4	11.7	1.1	1.25	2.8	5.7	12.6	•	•	•
0480162	POUCH MOUNT PLATE - 1T2	416	183	28.5	16.4	7.2	1.1	0.72	1.6	2.8	6.2	•	•	•
0480191	TRACK ADAPTER - POUCH MOUNT PLATE	564	183	54	22.2	7.2	2.1	1.23	2.7	16	35.3	•	•	•

iNCASE MOUNTING OPTIONS

The Multi-Mount provides a secure solution for mounting an iNCASE or older style SafePak in a vertical, open position on tracks. As the next-generation mount for iNTRAXX cases, it replaces the original SafePak Mount with a lighter, lower-profile design and a smaller footprint.

The Multi-Mount attaches to the iNTRAXX track using a SafeMount connector and is available in two sizes: the popular 2-row version and a larger 3-row option. Multi-Mounts come as a complete unit with a SafeMount included, or as a stand-alone mount without the SafeMount.

MULTI-MOUNT - 3 ROW



Front View

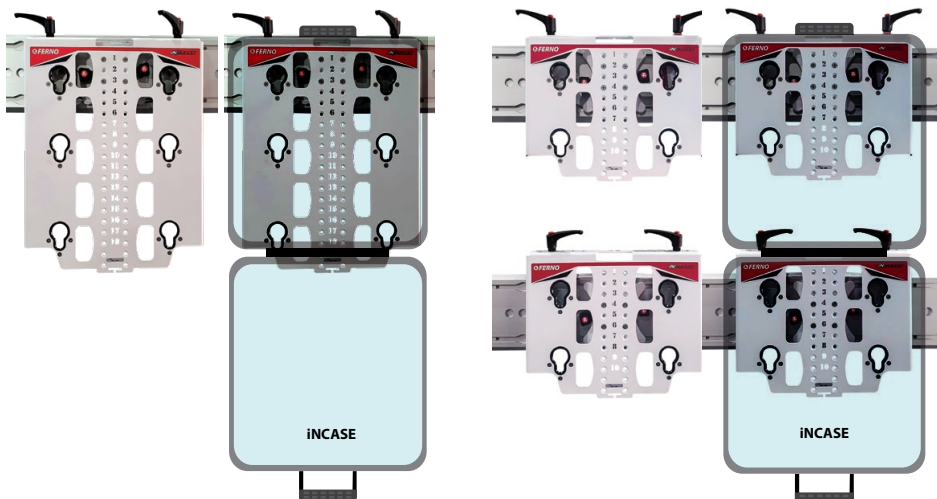
Rear view with SafeMounts

MULTI-MOUNT - 2 ROW



2-Row Multi-Mount
(attached to iNTRAXX track)

READY REFERENCE: iNCASE MULTI-MOUNT REQUIREMENTS



SPECIFICATIONS

PART #	PRODUCT	METRIC (MM)			IMPERIAL (IN)			WEIGHT		LOAD CAPACITY		CRASH-TESTED		
		L	W	D	L	W	D	KG	LB	KG	LB	10G	22G	26G
0480193	MULTI-MOUNT 3 ROW W/ SAFEMT	423	601	44	16.7	23.7	1.7	3.3	7.3	17.2	37.9	•	•	•
0480209	MULTI-MOUNT 3 ROW PLATE ONLY	423	601	30	16.7	23.7	1.2	2.45	5.4	17.2	37.9	•	•	•
0480201	MULTI-MOUNT 2 ROW W/ SAFEMT	423	401	44	16.7	15.8	1.7	2.45	5.4	11.4	25.1	•	•	•
0480207	MULTI-MOUNT 2 ROW PLATE ONLY	423	401	30	16.7	15.8	1.2	1.6	3.5	11.4	25.1	•	•	•

iNCAB STORAGE CABINETS



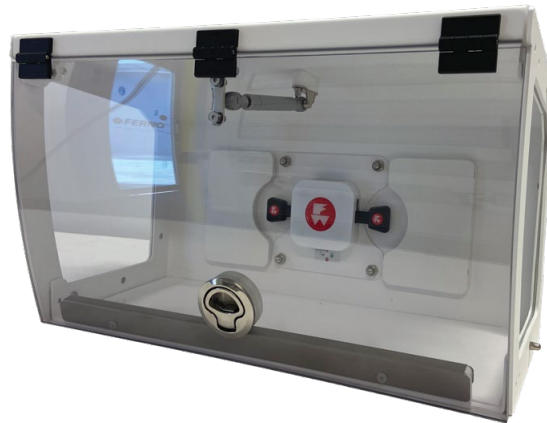
The new iNCAB is the latest addition to the iNTRAXX storage range. Its modular, lightweight design creates a strong, expandable cabinet that adapts to changing needs.

iNCAB mounts directly to the iNTRAXX track and its contoured shape fits both box-style and curved wall or ceiling spaces. Clear, flip-up hinged doors provide easy visibility and access from seated or standing positions.

- Modular design allows two or more cabinets to connect for a clean, continuous storage space.
- Strong, lightweight construction helps reduce overall vehicle mass.
- Easy to clean and decontaminate.
- 6 kg / 13.2 lb load capacity per module.



0480258 iNCAB 500

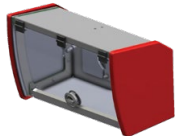
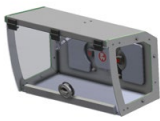

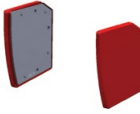


0480259 iNCAB 500 MODULE



0480257 iNCAB CONNECTION KIT

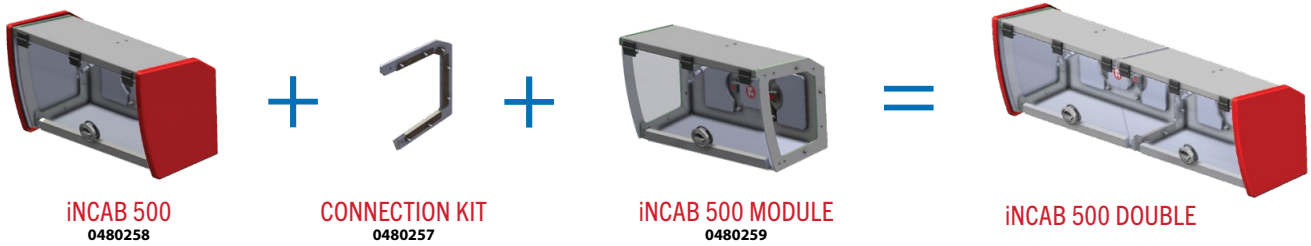
iNCAB COMPONENTS AND SPECIFICATIONS

				
Part #	0480258	0480259	0480257	0480246
Description	iNCAB 500	iNCAB 500 Module	iNCAB Connection Kit	iNCAB Side Panels Kit
Overall Size	557 x 325 x 275 mm	501 x 325 x 275 mm	7 x 305 x 265 mm	56 x 325 x 275 mm
	21.9 x 12.8 x 10.8 in	19.7 x 12.8 x 10.8 in	0.3 x 12 x 10.4 in	2.2 x 12.8 x 10.8 in
Storage Volume	0.034 m ³	0.034 m ³	N/A	N/A
	2074.81 in ³	2074.81 in ³		
Weight	7.6 kg	6.1 kg	0.25 kg	1.5 kg
	16.8 lbs	13.4 lbs	0.6 lbs	3.3 lbs
Load Capacity	6 kg	6 kg	N/A	N/A
	13.2 lbs	13.2 lbs		
CRASH-TESTED	10G / 22G / 26G	10G / 22G / 26G	10G / 22G / 26G	10G / 22G / 26G



TO MAKE A DOUBLE CABINET

- Start with one iNCAB 500 (0480258) cabinet. On the joining side, remove the red side panel for later use.
- Add an iNCAB Connection Kit (0480257) plus an iNCAB 500 Module (0480259).
- Refit the red side panel to complete the double cabinet.



TO MAKE A TRIPLE CABINET

- Start with one iNCAB 500 (0480258) cabinet. On the joining side, remove the red side panel for later use.
- Add an iNCAB Connection Kit (0480257) plus an iNCAB 500 Module (0480259).
- Add a second iNCAB Connection Kit (0480257) and iNCAB 500 Module (0480259).
- Refit the red side panel to complete the triple cabinet.



INCAB MULTIPLE CONFIGURATIONS

	OVERALL LENGTH		OVERALL WIDTH		OVERALL DEPTH		WEIGHT		STORAGE		LOAD CAPACITY	
	METRIC	IMPERIAL	METRIC	IMPERIAL	METRIC	IMPERIAL	METRIC	IMPERIAL	METRIC	IMPERIAL	METRIC	IMPERIAL
iNCAB 500 DOUBLE	1065 MM	41.9 IN	325 MM	12.8 IN	275 MM	10.8 IN	13.95 KG	30.8 LBS	0.068 M ³	4149.6 IN ³	12 KG	26.4 LBS
iNCAB 500 TRIPLE	1573 MM	61.9 IN	325 MM	12.8 IN	275 MM	10.8 IN	20.3 KG	44.8 LBS	0.102 M ³	6224.4 IN ³	18 KG	39.6 LBS

INTRAXX USE CASES

INCAB 600

The iNCAB 600 is a standalone, non-modular cabinet designed to maximize space efficiency. It is not compatible with the iNCAB 500 module and cannot be connected to form a double cabinet. iNCAB 600 is available by special order only.



SPECIFICATIONS

PART #	PRODUCT	METRIC (MM)			IMPERIAL (IN)			WEIGHT		STORAGE		LOAD CAPACITY		CRASH-TESTED		
		L	W	D	L	W	D	KG	LB	M ³	IN ³	KG	LB	10G	22G	26G
0480262	iNCAB 600	620	325	275	24.4	12.8	10.8	9/7	19.2	0.038	2319	6	13.2	•	•	•

DUBAI | FIELD SUPPORT UNIT



Dubai Corporation for Ambulance Services (DCAS) chose iNTRAXX for its specialized Field Support Unit, a high-readiness ambulance designed to support major emergencies and large-scale incidents across challenging terrain. The vehicle reflects DCAS's operational excellence and ability to respond effectively in complex environments.

Engineered for off-road operations, the Field Support Unit must perform reliably in harsh desert conditions, mountainous regions, and remote or unpaved areas while transporting multiple patients, medical personnel, and critical medical equipment.

DCAS required a lightweight, adaptable mounting system that maximized interior space and ensured rapid access to consumable medical supplies.

With iNTRAXX already standardized across its ambulance fleet, DCAS selected a proven and familiar solution.

The vehicle is equipped with iNTRAXX INCAB, track systems, SafePouch storage, pouch mount plates, and dedicated mounts including the LP15. Consumables are stored in iNTRAXX pouches mounted to the walls using a combination of direct and track-mounted pouch plates, creating a secure, modular interior that enhances efficiency, crew movement, and operational readiness.





***iN/*TRAXX™**

MOUNTING SOLUTIONS

iNTRAXX mounting solutions bring flexibility and precision to every emergency vehicle.

Equipment mounts enable equipment to be attached securely to the system's tracks. With an intuitive quick-release locking mechanism, these connectors can be unlocked in a single motion, enabling fast repositioning along the track or easy removal when not in use.

iNTRAXX Mounts include:

- **TRACK CONNECTORS** — versatile, generic mounts designed to interface with a wide range of equipment.
- **EQUIPMENT-SPECIFIC MOUNTS** — defibrillators/monitors, suction, and ventilator mounts allow paramedics to position equipment exactly where it's needed while ensuring it remains firmly secured during transit.
- **POLE & RAIL MOUNTS**
- **OXYGEN MOUNTS**
- **ACCESSORY MOUNTS** — keep work trays, sharps containers, trash bins and other work flow tools securely locked to tracks, preventing them from becoming dangerous projectiles during sudden maneuvers.
- **SEATS AND CHAIR MOUNTS**

TRACK CONNECTORS

Versatile, generic mounts designed to interface with a wide range of equipment.



TRACK CLIP

Track Clips mount direct to the iNTRAXX track to provide an attachment point for strapping, hanging, or attaching equipment.



SAFEMOUNT THREADED 25 KG

The SafeMounts with 25 kg load capacity is our most popular mounting solution. It securely holds a wide range of equipment, which then attaches and locks onto the iNTRAXX track system.



SAFEMOUNT THREADED 12 KG

The SafeMounts with 12 kg functions identically to the 25 kg version, but with half the load capacity.



SAFEMOUNT WITH CONNECTOR

The SafeMounts with Connector consists of two components: the SafeMounts with its built-in locking mechanism, and a disk-shaped Connector. The Connector attaches directly to the equipment and stays with it, while the SafeMounts is secured to the track. To attach or remove equipment, simply slide the Connector into or out of the SafeMount's V-shaped receiving section.



SWIVEL MOUNT WITH REAR VERTICAL HOLDER

Ideal for mounting vertical plates to attach devices or other products. Rotates 360° and features multiple lock locations. Compatible with Ferno PacRac+ and iNTRAXX bench track.



SWIVEL SAFEMOUNT - LONG HANDLE

Ideal for mounting equipment to Ferno PacRacs™ and bench track with full 360° rotation and multiple locking positions.



SWIVEL SAFEMOUNT - SHORT HANDLE

Compatible with Ferno PacRacs and iNTRAXX bench track, offering 360° rotation and multiple lock points.



T SLOT FOOT

With two M6 threaded holes at 16 mm centers, the T-Slot Foot offers an alternative method for mounting various products to the iNTRAXX system.



SPECIFICATIONS

PART #	PRODUCT	METRIC (MM)			IMPERIAL (IN)			WEIGHT		LOAD CAPACITY		CRASH-TESTED		
		L	W	D	L	W	D	KG	LB	KG	LB	10G	22G	26G
0480008	TRACK CLIP	69	41.5	42	2.7	1.6	1.7	0.1	0.2	2.27	5	●	●	●
0480010	SAFEMOUNT THREADED 25 KG	167	151	40	6.6	5.9	1.6	0.854	1.9	25	55.1	●	●	●
0480146	SAFEMOUNT THREADED 12 KG	167	151	40	6.6	5.9	1.6	0.74	1.6	12	26.5	●	●	●
0480011	SAFEMOUNT WITH CONNECTOR	167	199	52	6.6	7.8	2	0.85	1.9	10	22	●	●	●
0480012	SAFEMOUNT CONNECTOR DISC	45.7	45.7	14.9	1.8	1.8	0.6	0.45	1	10	22	●	●	●
0480089	T SLOT FOOT	31	19	7	1.2	0.7	0.3	0.01	0	N/A	N/A			
0480164	SWIVEL MOUNT - LONG HANDLE	167	299	66	6.6	11.8	2.6	1.75	3.9	13.95	30.8	●	●	●
0480165	SWIVEL MOUNT - SHORT HANDLE	167	259	66	6.6	10.2	2.6	1.67	3.7	10.2	22.5	●	●	●



DEFIB / MONITOR MOUNTS

Mounts on this page are similarly shaped but are tailored to the specific models listed.



BOLT ON MOUNT
No SafeMounts required or supplied



WALL MOUNT
Attaches to wall track



SWIVEL MOUNT
Attaches to track on bench



WALL AND SWIVEL MOUNT
Attaches to track on a wall or bench

SPECIFICATIONS

PART #	PRODUCT	METRIC (MM)			IMPERIAL (IN)			WEIGHT		LOAD CAPACITY		CRASH-TESTED		
		L	W	D	L	W	D	KG	LB	KG	LB	10G	22G	26G
LIFEPAK® 15														
0480298	LIFEPAK 15 DEFIB BOLT ON WALL & BENCH MOUNT (SPECIAL)	210	356	321	8.3	14	12.6	6.7	14.8	13.95	30.8	•	•	•
0480013	LIFEPAK 15 DEFIB WALL MOUNT	210	356	321	8.3	14	12.6	6.7	14.8	13.95	30.8	•	•	•
0480014	LIFEPAK 15 DEFIB SWIVEL MOUNT	210	415	304	8.3	16.3	12	7.4	16.3	13.95	30.8	•	•	•
0480015	LIFEPAK 15 DEFIB WALL & SWIVEL	210	415	344	8.3	16.3	13.5	8.3	18.3	13.95	30.8	•	•	•
Compatible with LifePak 15 with or without its case.														
ZOLL® X SERIES®														
0480297	ZOLL X DEFIB BOLT ON WALL & BENCH MOUNT	210	282	285	8.3	11.1	11.2	5.6	12.3	6.2	13.7	•	•	•
0480019	ZOLL X DEFIB WALL MOUNT	210	282	285	8.3	11.1	11.2	5.6	12.3	6.2	13.7	•	•	•
0480020	ZOLL X DEFIB SWIVEL MOUNT	210	342	265	8.3	13.5	10.4	7.9	17.4	6.35	14	•	•	•
0480021	ZOLL X DEFIB WALL & SWIVEL MOUNT	210	342	305	8.3	13.5	12	8.8	19.4	6.2	13.7	•	•	•
Compatible with Zoll X soft case including rear pouch														

DEFIB / MONITOR MOUNTS



**ZOLL X WALL MOUNT
(CHARGING) 0480197**



**ZOLL X BOLT ON MOUNT
(CHARGING) 0480217**



**ZOLL AED 3
WALL MOUNT
0480149**



**ZOLL AED 3
BOLT ON MOUNT
0480150**



**PHYSIO LP1000 AED
WALL MOUNT
0480084**



**ZOLL AED PLUS ADAPTER
0480239**

Enables existing AED3 mounts (0480149 and 0480150) to be adapted for compatibility with multiple AED models.



**ZOLL AED PLUS DEFIB
WALL MOUNT 0480241**



**ZOLL AED PLUS DEFIB
BOLT ON MOUNT
0480242**



**MINDRAY N1 DEFIB
BOLT ON MOUNT
0480242**

SPECIFICATIONS

PART #	PRODUCT	METRIC (MM)			IMPERIAL (IN)			WEIGHT		LOAD CAPACITY		CRASH-TESTED		
		L	W	D	L	W	D	KG	LB	KG	LB	10G	22G	26G

ZOLL® X SERIES®

0480197	ZOLL X DEFIB WALL MOUNT (CHARGING)	205	292	136	8.1	11.5	5.4	3.7	8.2	12	26.5	•	•	•
		Supplied as a kit including Zoll mount, Zoll charge adapter plus bolts for attaching the unit to a SafeMounts (sold separately). Compatible Safemounts: 0480010 or 0480146. Zoll bag not included.												
0480217	ZOLL X DIRECT WALL MOUNT (CHARGING)	205	292	101	8.1	11.5	4	2.8	6.2	12	26.5	•	•	•
		Supplied as a kit including Zoll mount, Zoll charge adapter plus bolts for attaching the unit to the wall. Refer to separate user instructions. Zoll bag not included.												

ZOLL AED 3®

0480149	ZOLL AED3 DEFIB WALL MOUNT	260	312	229	10.2	12.3	9	2.6	5.7	3.6	7.9	•	•	•
		Zoll AED 3 can be retained in the mount with or without the AED case. iNTRAXX track mount only.												
0480150	ZOLL AED3 DEFIB BOLT ON MOUNT	260	312	191	10.2	12.3	7.5	1.9	4.2	3.6	7.9	•	•	•
		Zoll AED3 can be retained in the mount with or without the AED case. Direct to wall mount only.												

ZOLL AED PLUS®

0480239	ZOLL AED PLUS ADAPTER KIT (MINDRAY COMPATIBLE)	220	255	60	8.7	10	2.4	0.44	1	3.6	7.9	•	•	•
0480241	ZOLL AED PLUS DEFIB WALL MOUNT	260	367	229	10.2	14.4	9	3.1	6.8	3.6	7.9	•	•	•
0480242	ZOLL AED PLUS DEFIB BOLT ON MOUNT	260	367	191	10.2	14.4	7.5	2.3	5.1	3.6	7.9	•	•	•

MINDRAY® N1

0480203	MINDRAY N1 DEFIB BOLT ON MOUNT	170	139	128	6.7	5.5	5	0.47	1	2	4.4	•	•	•
---------	--------------------------------	-----	-----	-----	-----	-----	---	------	---	---	-----	---	---	---

PHYSIO-CONTROL® LP1000 AED

0480084	PHYSIO LP1000 DEFIB WALL MOUNT (TRACK)	253	195	62	10	7.7	2.4	1.4	3.1	4	8.8	•	•	•
---------	--	-----	-----	----	----	-----	-----	-----	-----	---	-----	---	---	---



**CORPULS 3
WALL MOUNT**
0480056



**CORPULS
MONITOR MOUNT**
0480093



**CORPULS 3
SWIVEL MOUNT**
0480094



**CORPULS 3
WALL & SWIVEL MOUNT**
0480095



**SCHILLER DEFIGARD T7
WALL MOUNT**
0480224



**TEMPUS LS
WALL MOUNT**
0480180



**TEMPUS PRO KIT
WALL MOUNT**
0480181



**TEMPUS PRO 360 SWIVEL
MOUNT** 0480182
360 degree swivel mount allows
Tempus Pro and LS to be mount-
ed individually or back-to-back.



TEMPUS MOUNT STACKER
0480183
Used in conjunction with
0480182 bench mount to allow
'double stacking' of Tempus LS
above the Tempus Pro.



**TEMPUS MOUNTING
BRACKET KIT** 0480218
Provides multiple mounting
options for the Pro and LS.

SPECIFICATIONS

PART #	PRODUCT	METRIC (MM)			IMPERIAL (IN)			WEIGHT		LOAD CAPACITY		CRASH-TESTED		
		L	W	D	L	W	D	KG	LB	KG	LB	10G	22G	26G

CORPULS® 3

0480056	CORPULS 3 DEFIB WALL MOUNT	261	232	98	10.3	9.1	3.9	1.59	3.5	14	30.9	•	•	•
0480093	CORPULS 3 DEFIB MONITOR MOUNT	167	199	98	6.6	7.8	3.9	1.3	2.9			•	•	•
0480094	CORPULS 3 DEFIB SWIVEL MOUNT	300	261	253	11.8	10.3	10	2.24	4.9	10.2	22.5	•	•	•
0480095	CORPULS 3 DEFIB WALL & SWIVEL MOUNT	261	299	266	10.3	11.8	10.5	3.36	7.4	10.2	22.5	•	•	•

All mounts use the Corpuls mounting adapter. Charging bracket Defibrillator/Pacer Unit 12V DC obtained separately.

SCHILLER® DEFIGARD TOUCH 7 (GEN 2)

0480224	DEFIGARD TOUCH 7 WALL MOUNT Docking station required	204	192	56	8	7.6	56	2.2	1.4	3.1	25	•	•	•
---------	---	-----	-----	----	---	-----	----	-----	-----	-----	----	---	---	---

TEMPUS®

0480180	TEMPUS LS WALL MOUNT	195	165	175	7.7	6.5	6.9	2.4	5.3	3.7	8.2	•	•	•
0480181	TEMPUS PRO KIT WALL MOUNT*	310	151	177	12.2	5.9	7	3.7	8.2	5	11	•	•	•
0480182	TEMPUS PRO 360 SWIVEL MOUNT**	165	202	291	6.5	8	11.5	2.3	5.1	8.7	19.2	•	•	•

D.360 mount not included This Tempus swivel mount is used to attach Tempus LS or Pro docks in either a single configuration, or back-to-back. Always follow product instructions.

0480183	TEMPUS LS STACKED - ADAPTER ONLY	97	400	135	3.8	15.7	5.3	0.6	1.3	3.7	8.2	•	•	•
0480218	TEMPUS MOUNTING BRACKET KIT (LOWER BRACKET & BOLT KIT)	100	160	130	3.9	6.3	5.1	0.65	1.4	8.7	19.2	•	•	•

*Tempus LS Smart Dock sold separately. **Tempus PRO Smart Dock sold separately

VENTILATOR MOUNTS



HAMILTON T1 WALL MOUNT
0480139



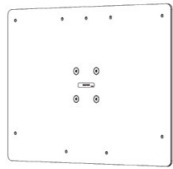
IMPACT 731 VENTILATOR MOUNT
0480038



PNEUPAC MOUNTING PLATE
0480074



COMBO ADAPTER MOUNT
0480199



WEINMANN LIFEBASE 3NG MOUNT 0480159
Fits the wall mounting base station 3NG only



STANDARD 2 / MEDUMAT AVIATION POLE WALL MOUNT 0480231



DRÄGER DS SWIVEL BENCH MOUNT
0480110



DRÄGER DW WALL MOUNT
0480109

SPECIFICATIONS

PART #	PRODUCT	METRIC (MM)			IMPERIAL (IN)			WEIGHT		LOAD CAPACITY		CRASH-TESTED		
		L	W	D	L	W	D	KG	LB	KG	LB	10G	22G	26G

HAMILTON® T1 VENTILATOR

0480139	HAMILTON T1 MOUNT	245	98	210	9.6	3.9	8.3	0.5	1.1			•	•	•
---------	-------------------	-----	----	-----	-----	-----	-----	-----	-----	--	--	---	---	---

IMPACT 731

0480038	IMPACT 731 VENTILATOR MOUNT	167	199	64	6.6	7.8	2.5	0.9	2	4.5	9.9	•	•	•
---------	-----------------------------	-----	-----	----	-----	-----	-----	-----	---	-----	-----	---	---	---

PNEUPAC®

0480074	PNEUPAC MOUNTING PLATE	167	199	60	6.6	7.8	2.4	1.1	2.4	4.1	9	•	•	•
---------	------------------------	-----	-----	----	-----	-----	-----	-----	-----	-----	---	---	---	---

WEINMANN®

0480199	COMBO ADAPTER MOUNT FITS WEINMANN ACCUVAC, MEDUVENT AND 1NG	167	163	57	6.6	6.4	2.2	2.8	1.25	2.35	5.2	•	•	•
---------	--	-----	-----	----	-----	-----	-----	-----	------	------	-----	---	---	---

0480159	LIFEBASE 3NG WALL MOUNT Docking station required, not included	404	280	56.7	15.9	11	2.2	2.22	4.9			•	•	•
---------	---	-----	-----	------	------	----	-----	------	-----	--	--	---	---	---

0480231	MEDUMAT STANDARD 2 / MEDUVENT MOUNT AVIATION POLE WALL MOUNT	205	126	92	8.1	5	3.6	0.6	1.3	10	22	•	•	•
---------	--	-----	-----	----	-----	---	-----	-----	-----	----	----	---	---	---

0480230	MEDUMAT STANDARD 2 / MEDUVENT MOUNT KIT	205	126	130	8.1	5	5.1	0.97	2.1	10	22	•	•	•
---------	--	-----	-----	-----	-----	---	-----	------	-----	----	----	---	---	---

DRÄGER® OXYLOG 3000

0480110	DRÄGER VENTILATOR DS BENCH MOUNT	243	351	251	9.6	13.8	9.9	3.93	8.7	6	13.2	•	•	•
---------	-------------------------------------	-----	-----	-----	-----	------	-----	------	-----	---	------	---	---	---

0480109	DRÄGER VENTILATOR DW WALL MOUNT	243	285	259	9.6	11.2	10.2	3.14	6.9	6	13.2	•	•	•
---------	------------------------------------	-----	-----	-----	-----	------	------	------	-----	---	------	---	---	---

SUCTION MOUNTS



LAERDAL SUCTION UNIT MOUNT 0480042

Also requires the LSU Wall Bracket, with or without power cord.



LAERDAL LCSU4 WALL & BENCH MOUNT 0480048

This mounting kit supports both wall and bench mounting in a single solution. It fits the blue-wired Laerdal LCSU frame with or without a large canister and also includes all components, including the SafeMount.



SSCOR SUCTION WALL MOUNT 0480043

Also requires the LSU Wall Bracket, with or without power cord.



SAM E.P.S. SUCTION WALL MOUNT 0480169

The adapter bracket enables the SAM e.p.s. wall bracket to be mounted to the track with a SafeMount 0480146. The pack for the SAM suction unit contains the adapter plate and necessary hardware.



ASKIR SUCTION - HOLDER 0480223

Holder for the Askir Suction Unit. Adding different iNTRAXX mounting options, allows you to mount the Askir Suction Unit to the wall, bench or on a swivel mount.

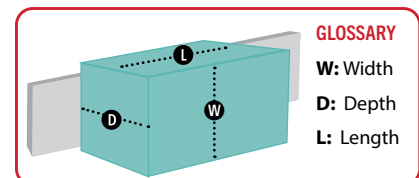


ASKIR WALL MOUNT KIT 0480233

This is the Askir Suction Holder (0480223) with SafeMount included for mounting the unit to the wall track.



HERSILL V7 PLUS B EMERGENCY WALL MOUNT 0480124



SPECIFICATIONS

PART #	PRODUCT	METRIC (MM)			IMPERIAL (IN)			WEIGHT		LOAD CAPACITY		CRASH-TESTED		
		L	W	D	L	W	D	KG	LB	KG	LB	10G	22G	26G
LAERDAL®														
0480042	LAERDAL LSU WALL MOUNT	190	173	5w7	7.5	6.8	2.2	1.2	2.6	5.5	12.1	•	•	•
0480048	LAERDAL LCSU4 WALL & BENCH	176	255	254	6.9	10	10	3.6	7.9	2.37	5.2	•	•	•
SSCOR®														
0480043	SSCOR SUCTION WALL MOUNT	200	151	60	7.9	5.9	2.4	1.2	2.6	8.83	19.5	•	•	•
SAM E.P.S.® (MG ELECTRIC)														
0480169	SAM EPS SUCTION WALL MOUNT	247	130	10	9.7	5.1	0.4	2.7	6	8.7	19.2	•	•	•
HERSILL®														
0480124	HERSILL V7 PLUS B EMERGENCY WALL MOUNT	167	151	48	6.6	5.9	1.9	1.05	2.3	6.2	13.7	•	•	•
ASKIR®														
0480223	ASKIR SUCTION - HOLDER	267	119	204	10.5	4.7	8	0.73	1.6	4	8.8	•	•	•
0480233	ASKIR WALL MOUNT KIT	267	151	244	10.5	5.9	9.6	1.5	3.3	4	8.8	•	•	•



POLE & RAIL MOUNTS

Pole mounts provide an ergonomic and versatile solution for securing equipment fitted with clamp-style attachments. Complementing this, Medrail extend this versatility, accommodating equipment pre-fitted with Medrail-style mounts for both 25 mm and 30 mm rail configurations.



**POLE MOUNT
SINGLE
0480080**



**POLE MOUNT
DOUBLE
0480081**



**POLE MOUNT
VERTICAL
0480112**



**MEDRAIL MOUNT - 25MM
0480082**



**MEDRAIL MOUNT - 30MM
0480091**

SPECIFICATIONS

PART #	PRODUCT	METRIC (MM)			IMPERIAL (IN)			WEIGHT		LOAD CAPACITY		CRASH-TESTED		
		L	W	D	L	W	D	KG	LB	KG	LB	10G	22G	26G
0480080	POLE MOUNT - SINGLE	167	206	140	6.6	8.1	5.5	1.62	3.6	10	22	•	•	•
0480081	POLE MOUNT - DOUBLE	167	320	103	6.6	12.6	4.1	1.7	3.7	10	22	•	•	•
0480082	MEDRAIL MOUNT - 25MM	305	151	81	12	5.9	3.2	1.4	3.1	15	33.1	•	•	•
0480091	MEDRAIL MOUNT - 30MM	305	151	81	12	5.9	3.2	1.44	3.2	15	33.1	•	•	•
0480112	POLE MOUNT - VERTICAL	167	151	255	6.6	5.9	10	1.29	2.8	10	22	•	•	•



OXYGEN MOUNTS

CD O2 MOUNT BRACKET ONLY

The CD O2 mount bracket is sold separately, allowing flexible system configuration. Certification applies only to the complete assembly. Refer to the User Manual.



CD O2 SINGLE CYLINDER MOUNT

The CD O2 single cylinder mount features a unique, modular design that mounts to the iNTRAXX track and can be configured to hold one, two, or three cylinders.



CD O2 CYLINDER BRACKET ONLY

The CD O2 cylinder mount bracket is sold separately, allowing flexible system configuration. Certification applies only to the complete assembly. Refer to the User Manual.



SPECIFICATIONS

PART #	PRODUCT	METRIC (MM)			IMPERIAL (IN)			WEIGHT		LOAD CAPACITY		CRASH-TESTED		
		L	W	D	L	W	D	KG	LB	KG	LB	10G	22G	26G
0480127	CD O2 MOUNT BRACKET ONLY	142	500	10	5.6	19.7	0.4	1	2.2	12.3	27.1	•	•	•
0480128	CD O2 CYLINDER BRACKET	154	290	72	6.1	11.4	2.8	1	2.2	4.1	9	•	•	•
0480163	CD O2 SINGLE CYLINDER MOUNT	167	500	122	6.6	19.7	4.8	2.7	6	12.3	27.1	•	•	•

ACCESSORY MOUNTS



ACCESSORY MOUNTS



LITTER ARM - ROTATING / MULTIPURPOSE

0480036

Supplied as a pair, the litter arms offer a compact solution for supporting a range of products, including Ferno and Junkin litters.



LITTER ARM MOUNT - TALON 90C

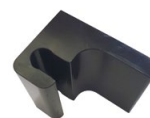
0480037

Supplied as a pair, the litter arms offer a compact solution for supporting the Talon 90C litter on an iNTRAXX wall.



LITTER ARM - RATCHET LATCH

0480220



LITTER ARM SPACER

0480168

The Litter Arm Spacer is used with the rotating / multipurpose litter arm (0480036) and ratcheting litter arm (0480220) to provide additional spacing, ensuring the litter is securely held when latched.

LITTER ARM - BOARD LOCK 0480215

Used with iNTRAXX litter arms, The Board Lock provides a quick and secure method for positioning and retaining spine boards. One Board Lock is recommended per litter arm.



LITTER ARM - LOAD-ASSIST WEDGE 0480153

The Litter Arm Load-Assist Wedge provides a seamless transition when loading a compatible litter into the litter arm.

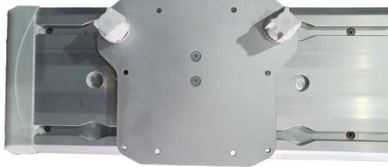


SPECIFICATIONS

PART #	PRODUCT	METRIC (MM)			IMPERIAL (IN)			WEIGHT		LOAD CAPACITY		CRASH-TESTED		
		L	W	D	L	W	D	KG	LB	KG	LB	10G	22G	26G
0480036	LITTER ARM - ROTATING/MULTIPURPOSE	167	182	730	6.6	7.2	28.7	6	13.2	80	176.4			
0480037	LITTER ARM - TALON2 90C MOUNT	167	151	730	6.6	5.9	28.7	6	13.2	83.2	183.4	•		
0480153	LITTER ARM LOAD-ASSIST WEDGE	52	45	195	2	1.8	7.7	0.365	0.8	N/A	N/A			
0480168	LITTER ARM SPACER	45	50	36	1.8	2	1.4	0.05	0.1	N/A	N/A			
0480215	LITTER ARM - BOARD LOCK	160	42	40	6.3	1.7	1.6	0.2	0.4	85	187.4	•		
0480220	LITTER ARM - RATCHET LATCH	182	167	685	7.2	6.6	27	6	13.2	85	187.4	•		

TRASH HAMPER MOUNT - OPHARDT

0480106



TRASH CONTAINER MOUNT - CW CONTAINER

0480249



0480251 TRASH CONTAINER IN MOUNT

SHARPS CONTAINER

0480250



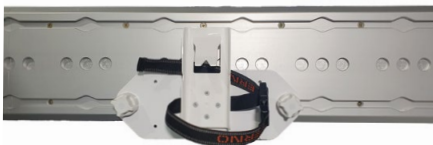
SHARPS CONTAINER

0480248



SHARPSAFE 4LT WALL MOUNT

0480141



1.4LT SHARPS MOUNT

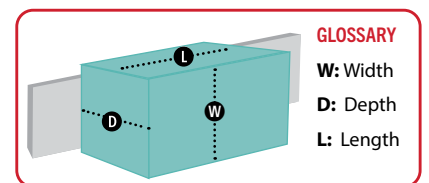
0480195



SLIDELOC KIT

0480192

The SlideLoc Kit can be used with various equipment, as a quick release mounting solution.



SPECIFICATIONS

PART #	PRODUCT	METRIC (MM)			IMPERIAL (IN)			WEIGHT		LOAD CAPACITY		CRASH-TESTED		
		L	W	D	L	W	D	KG	LB	KG	LB	10G	22G	26G
0480106	TRASH HAMPER - OPHARDT	240	292	180	9.4	11.5	7.1	1	2.2	0.5	1.1	•	•	•
0480249	TRASH CONTAINER MOUNT - CW CONTAINER	242	288	191	9.5	11.3	7.5	2	4.4	0.5	1.1	•	•	•
0480192	SLIDELOC KIT	167	151	86	6.6	5.9	3.4	1.3	2.9	5	11	•	•	•
0480141	SHARPSAFE 4LT WALL MOUNT	295	178	66	11.6	7	2.6	0.75	1.7	0.5	1.1	•	•	•
0480195	1.4LT SHARPS MOUNT (NO SHARPS)	295	160	134	11.6	6.3	5.3	1	2.2	0.75	1.7	•		
0480248	SHARPS CONTAINER MOUNT - C/W CONTAINER	242	288	191	9.5	11.3	7.5	2	4.4	0.5	1.1	•	•	•
0480250	SHARPS CONTAINER	290	310	110	11.4	12.2	4.3							
0480251	TRASH CONTAINER	290	300	110	11.4	11.8	4.3							

ACCESSORY MOUNTS

WORK TRAY WITH ARM

0480039

The Work Tray provides a stable area to place quick grab items when attending to a patient. The arm enables the tray to be positioned to a comfortable position.



WORK TRAY HINGED 2.0

0480123

The Hinged Work Tray may be positioned anywhere on the track to provide a stable area for small items when attending to a patient.



TABLET MOUNT GENERAL

B101UC 0480190

The General Tablet Mount has an adjustable arm. It allows various tablets or devices to be mounted and secured to the track while in use. Third party holders, compatible with your specific tablet, can be purchased separately, and attached to the tablet mount.



GLOVEBOX - SINGLE

0480099

The Single Glovebox Holder houses most sizes of standard glove boxes. Designed for easy cleaning, loading and mounting with rotating lock knobs.



GLOVEBOX - TRIPLE

0480100

The Triple Glovebox Holder houses most sizes of standard glove boxes. Designed for easy cleaning, loading and mounting with rotating lock knobs.



GLOVEBOX - QUAD

0480101

The Quad Glovebox Holder houses most sizes of standard glove boxes. Designed for easy cleaning, loading and mounting with rotating lock knobs.



SPECIFICATIONS

PART #	PRODUCT	METRIC (MM)			IMPERIAL (IN)			WEIGHT		LOAD CAPACITY		CRASH-TESTED		
		L	W	D	L	W	D	KG	LB	KG	LB	10G	22G	26G
0480039	WORK TRAY WITH ARM	323	233	290	12.7	9.2	11.4	1.37	3			•	•	•
0480123	WORK TRAY HINGED 2.0	323	117	362	12.7	4.6	14.3	1.11	2.4			•	•	•
0480190	TABLET MOUNT GENERAL B101UC	167	199	250	6.6	7.8	9.8	1.06	2.3	1	2.2	•	•	•
0480099	GLOVEBOX - SINGLE	247	259	114	9.7	10.2	4.5	0.93	2.1	0.75	1.7	•	•	•
0480100	GLOVEBOX - TRIPLE	367	394	114	14.4	15.5	4.5	1.5	3.3	2.25	5	•	•	•
0480101	GLOVEBOX - QUAD	623	272	116	24.5	10.7	4.6	2.16	4.8	3	6.6	•	•	•

INTRAXX D.360 WALL MOUNT

0480151

The wall mount provides the platform for installation of the Zoll or Hamilton T1 or any other aviation products that use the D.360 system.



DEFIB DIRECT MOUNT ADAPTER BLOCK KIT

0480194

The Adapter Block is used when direct-to-wall or direct-to-bench mounting is required without using a SafeMounts and iNTRAXX track system.



SAFEMOUNT TO AVIATION D.360 ADAPTER PLATE

0480198

The SafeMounts to Aviation D.360 Adapter Plate enables the D.360 to be relocated on iNTRAXX track. When mounted to a SafeMounts using the adapter, the D.360 can be installed on either a bench or a PacRac.



CPR MOUNT

0480238

The iNTRAXX CPR Mount is a versatile, wall-mounted solution designed to accommodate various CPR devices stored in their bags or cases. It is adjustable to suit different device sizes, and currently fits the following CPR devices:

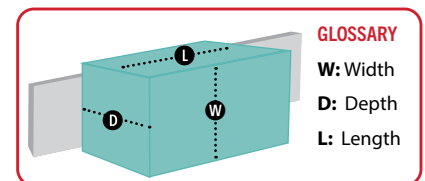
- LUCAS
- Corpuls
- LifeLine ARM XR



LOCK KNOB MULTI MOUNT

0480210

The Lock Knob Multi Mount provides versatile mounting options for a range of lightweight products. A series of pre-drilled holes allows easy attachment of equipment such as Pouch Mount plates, sphygmomanometers, and sharps containers, among others.



SPECIFICATIONS

PART #	PRODUCT	METRIC (MM)			IMPERIAL (IN)			WEIGHT		LOAD CAPACITY		CRASH-TESTED		
		L	W	D	L	W	D	KG	LB	KG	LB	10G	22G	26G
0480151	iNTRAXX D.360 WALL MOUNT	167	151	392.5	6.6	5.9	15.5	2	4.4	12	26.5	•	•	•
0480194	DEFIB DIRECT MOUNT ADAPTER BLOCK KIT	85	85	15	3.3	3.3	0.6	0.4	0.9			•	•	•
0480198	SAFEMOUNT TO AVIATION D.360 ADAPTER PLATE	193	152	8	7.6	6	0.3	0.19	0.4			•	•	•
0480210	LOCK KNOB MULTI MOUNT	295	110	54	11.6	4.3	2.1	0.61	1.3	2.04	4.5	•	•	•
0480238	CPR WALL MOUNT	320	582	152	12.6	22.9	6	3.2	7.1	10	22	•	•	•

SEATS & CHAIR MOUNTS

SAFESEAT WALL MOUNT - SINGLE LAPSASH

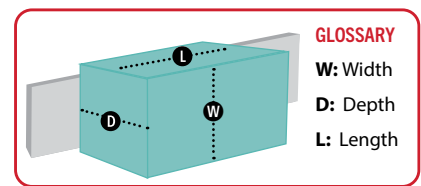
0480115

The SafeSeat mounts directly on to the iNTRAXX track enabling the seat to be positioned around the vehicle, or for extra seats to be added as clinical procedures demand.



SAFESEAT WALL MOUNT - DUAL LAPSASH

0480166



SPECIFICATIONS

PART #	PRODUCT	METRIC (MM)			IMPERIAL (IN)			WEIGHT		LOAD CAPACITY		CRASH-TESTED		
		L	W	D	L	W	D	KG	LB	KG	LB	10G	22G	26G
0480115	SAFESEAT - SINGLE LAPSASH	560	806	575	22	31.7	22.6	24	52.9	85	187.4			
0480166	SAFESEAT - DUAL LAPSASH	560	806	575	22	31.7	22.6	25	55.1	85	187.4			

- Dimensions are of the seat in unfolded position, with headrest fully extended.
- Refer to FMVSS and UN Regulation for test specifications. Refer to the Installation Manual for seat installation details.





AVIATION

Many ambulance services operate road and aeromedical transport as a single integrated system, or through close partnerships. Typically, road ambulances manage short-range transport, while aeromedical services undertake long-range or high-acuity retrievals. As a result, medical equipment frequently needs to travel with the patient across multiple transport platforms.

Ferno's Aviation Division manufactures aviation-specific tracks and mounting solutions that are compatible with the Ferno iNTRAXX system. This compatibility enables seamless, time-saving transfers of medical equipment between road and air environments, reducing handling, minimizing changeover time, and supporting continuity of care throughout the patient journey.

A selection of aviation components most commonly used to enable these transfers are included in this iNTRAXX guide, providing practical solutions for integrating medical equipment across road and aeromedical operations:

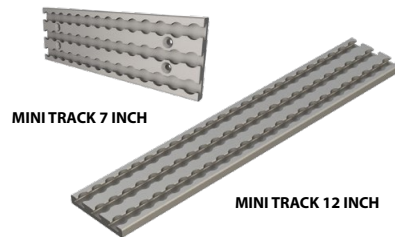
- Aviation Mini Track
- Aviation Poles and Clamps
- Aviation ProV Series
- Aviation D.360 Swivel System

AVIATION MINI TRACK

The Aviation Mini Track forms the base plate of the Pro Series system and is suitable for installation on any structurally appropriate surface, in either vertical or horizontal orientation.

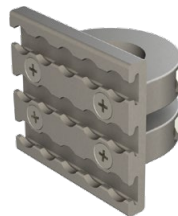
FERNO AVIATION MINI TRACK

Aviation Mini Track is available in pre-cut 7-inch and 12-inch lengths, with custom lengths also available as special orders. Bespoke Mini Track plates and trays can also be manufactured, e.g. as featured on the PacRac+ Equipment Table with Mini Track.



MINI TRACK FOR POLE MOUNT

This component enables a small piece of track to be mounted on a pole. A ProV Universal Receiver (FM300A100) is a versatile companion mount for this application.



PACRAC+™ WITH MINI TRACK

The PacRac+ supports equipment and IV fluid bags with a combined load of up to 25 kg (55 lb). It secures directly to the stretcher and features a Mini Track-profile tray, two integrated extendable IV poles, and pivoting side gates, allowing patients to be transferred on and off the stretcher without removing the PacRac+. When not in use, the unit folds flat for compact storage. Various models to suit different stretchers - ask your Ferno representative.



SPECIFICATIONS

PART #	PRODUCT	METRIC (MM)			IMPERIAL (IN)			WEIGHT		LOAD CAPACITY		TESTED
		L	W	D	L	W	D	KG	LB	KG	LB	
FM100E100-7	MINI TRACK - 7 INCH	178	57	8	7	2.25	0.31	0.69	1.54	22.6	50	●
FM100E100-12	MINI TRACK - 12 INCH	305	57	8	12	2.25	0.31	0.9	1.98	22.6	50	●
FM300A103	MINI TRACK POLE MOUNT	43	63	63	1.69	2.48	2.48	0.14	0.3	N/A	N/A	●
FA531A210	PACRAC+ WITH MINI TRACK	530	560	420	20.86	22.04	16.53	8.5	17.73	25	55.1	V

Mini Track Pole Mount tested for many different applications and loads in conjunction with the ProV Universal Receiver (FM300A100)
 PACRAC+ with Mini Track - Validation Process for Aviation Use.

AVIATION POLE & CLAMP SERIES

Ferno Aviation poles and clamps enable secure installation and rapid repositioning or removal of critical medical equipment and is compatible with iNTRAXX, allowing the same equipment to be used across air and ground platforms.

UNIVERSAL POLE CLAMP (UPC) FA849A100

Universal Pole Clamps are designed for use across both aeromedical and ground EMS transport. Each clamp can be mounted to vertical or horizontal tubing up to 3.8 cm / 1.5 inches in diameter and features integrated med-rail compatibility to enhance mounting flexibility. The UPC also serves as a base clamp for a wide range of medical devices.



M.360 EQUIPMENT POLE 15" WITH TELESCOPING IV

FA913A075
Tested to SAE J3043 (26.G)



MINI TRACK EQUIPMENT POLE

FA854A725-294 - Standard length
FA854A725-445 - Custom length pole for PacRac+ Mini Track. Aviation use only.



D.360 EQUIPMENT POLE FA908A885

The D.360 equipment pole is compatible with all equipment pole solutions, enabling rapid attachment/removal of equipment from the pole.

SAE J3043 (26.G);
EN 1879 (10G)



EQUIPMENT POLE WITH TELESCOPING IV

FA914A010-24-IV

Tested to meet Airworthiness Standards and SAE J3043.



iNX EQUIPMENT POLE SYSTEM FA889A050

Compatible with the Universal Pole Clamp, the pole features quick-release mounting for rapid attachment or removal from the iNX EMS cot. SAE J3043 (26G) and EN1789 (10G) Standards. Offered in 10", 15" and 18" lengths. D.360 option available.



SPECIFICATIONS

PART #	PRODUCT	METRIC (MM)			IMPERIAL (IN)			WEIGHT		LOAD CAPACITY		TEST-ED
		L	W	D	L	W	D	KG	LB	KG	LB	20.G
FA849A100	UNIVERSAL POLE CLAMP (UPC)	130	70	50	5.11	2.75	1.96	0.34	0.75	N/A	N/A	•
FA889A050	iNX EQUIPMENT POLE SYSTEM	664.9	106.9	65	26.18	4.21	2.56	1.3	3	12	26.4	26.G
FA854A725-294	MINI TRACK POLE - STANDARD	254	47	154	10	1.85	6.06	0.68	1.5	7	15.4	V
FA854A725-445	MINI TRACK POLE - CUSTOM	294	57	154	11.57	2.24	6.06	0.79	1.74	7	15.4	V
FA908A885	D.360 EQUIPMENT POLE	164	127	161.5	6.46	5	6.36	1.78	3.94	12	26.4	26.G
FA914A010-24-IV	EQUIPMENT POLE WITH TELESCOPING IV	609	31.75	31.75	24	1.25	1.25	1.61	3.5	10.38	22.9	26.G
FA913A075	LAERDAL CSU4 UPC	408.9	120.3	159.7	16.1	4.75	6.29	2.31	5.1	11.56*	25.5	26.G

V = Validation Process for Aviation Use

AVIATION PRO SERIES

A modular range of aircraft-certified device mounts designed for attaching to mounting tracks in aeromedical and military aircraft.

MINI PRO V UNIVERSAL RECEIVER MOUNT FM300A100

Provides a readily deployable interface between Mini-Track and Pro Series mounts for a large array of medical devices. Aviation use only.



ZOLL® MD/X ADAPTER FM300A102-MD

Mounts direct to the back of the Propaq MD/X Series. Once in place, it serves as the interface between the device and the Mini ProV Receiver Mount. Aviation use only.



ZOLL® VENTILATOR ADAPTER FA829A210-V

Lightweight mount that attaches directly to the rear of the device, providing an interface with the ProV Receiver. Set-screw mounting allows quick installation or removal. Compatible with Zoll Z-Vent, EMV+, and 330 Aspirator. Aviation use only.



HAMILTON® T-1 PRO ADAPTER FA909A110

The Hamilton T-1 ProV Adapter mounts directly to the Hamilton T1 Ventilator, creating an interface between the device and the ProV Receiver once installed. Mini-Track and ProV Receiver sold separately. Aviation use only.



ProV MED-RAIL CLAMP FA903A750

The adjustable clamp fits Med-Rails of varying widths, while the ProV Receiver allows for rapid installation and removal of Medical devices. Tested to SAE J3043; EN 1879

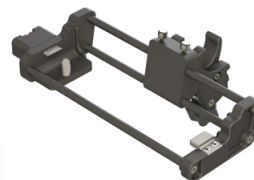


TEMPUS PRO® WALL MOUNT FM403A200

Secures the Tempus Pro to Ferno Mini Track installed on any structurally appropriate wall. The mount allows for rapid attachment and removal of the Tempus Pro for flight medic use. Aviation use only.



TEMPUS PRO POLE CLAMP FM400A111



PROPAQ® MD ADAPTER & UPC KIT FA821A330



SPECIFICATIONS

PART #	PRODUCT	METRIC (MM)			IMPERIAL (IN)			WEIGHT		LOAD CAPACITY		TEST-ED
		L	W	D	L	W	D	KG	LB	KG	LB	
FM300A100	MINI PRO V UNIVERSAL RECEIVER	90	80	40	3.54	3.14	1.57	0.45	0.99	WEIGHT OF DEVICE		●
FM300A102-MD	ZOLL MD/X ADAPTER	82	110	52	3.22	4.33	2.04	0.3	0.66	WEIGHT OF DEVICE		●
FA829A210-V	ZOLL VENTILATOR ADAPTER	57	49	21	2.25	1.95	0.86	0.05	0.13	WEIGHT OF DEVICE		●
FA909A110	HAMILTON T-1 PRO ADAPTER	40	50	10	1.57	1.96	0.39	1.27	2.8	8.6	19	V
FA903A750	ProV MED-RAIL CLAMP	197	114.3	51.05	7.19	4.5	2.01	1.35	2.98	4.4	9.7	
FM403A200	TEMPUS PRO WALL MOUNT	180	305.5	129	7.1	12.03	5.08	0.92	2.05	WEIGHT OF DEVICE		V
FM400A111	TEMPUS PRO POLE CLAMP	182	300	71	7.55	11.81	2.79	1.22	2.68	WEIGHT OF DEVICE		
FA821A330	PROPAQ MD ADAPTER & UPC KIT	148	148	112	5.82	5.82	4.41	1	2.2	12	26.45	●

V = VALIDATION PROCESS FOR AVIATION

AVIATION CLAMP SERIES (UPC)

A certified mounting system that securely and flexibly attaches critical care medical equipment to vertical or horizontal tubing up to 3.8 cm / 1 ½ inches in aircraft, helicopters, and ground EMS vehicles during patient transport. Includes integrated med-rail capability.



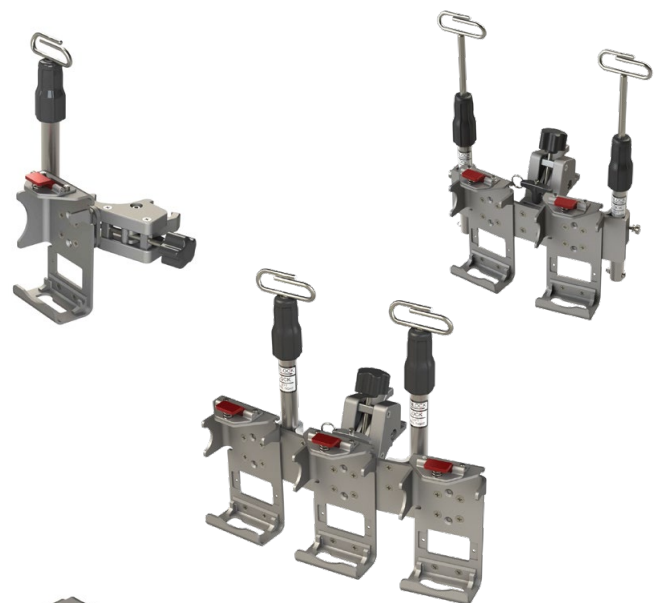
SAPPHIRE™ IV PUMP UPC

The Sapphire IV Pump UPC for the Sapphire Infusion Pump is available in single, double, or triple configurations.

Its integrated swivel enables the assembly to be secured to vertical or horizontal tubing, while quick-release mounting enables rapid pump installation or removal. Each configuration includes an extendable IV pole.

Tested to exceed FAA 20.G (rotary and fixed wing), SAE J3043, EN 1789 and Canadian Ground Ambulance standards. RoHS compliant.

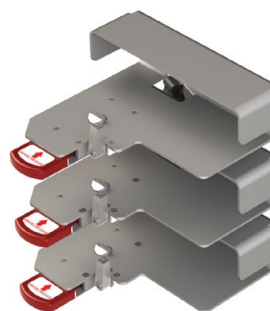
- FA910A670 - Single Sapphire IV Pump UPC
- FA911A140 - Double Sapphire IV Pump UPC
- FA911A145 - Triple Sapphire IV Pump UPC



B.BRAUN® IV TRIPLE UPC

The B.Braun IV Triple UPC secures up to three Braun IV pumps on an equipment pole, with quick-release mounts for easy pump installation or removal. Single and double configurations are also available. Tested to FAR Airworthiness Standards.

- FA910A350 - Triple B.Braun IV UPC



SPECIFICATIONS

PART #	PRODUCT	METRIC (MM)			IMPERIAL (IN)			WEIGHT		LOAD CAPACITY		TEST-ED
		L	W	D	L	W	D	KG	LB	KG	LB	
FA910A670	SAPPHIRE IV PUMP UPC - SINGLE	132	190.5	50.8	5.2	7.5	2	1.27	2.8	1.74	3.85	•
FA911A140	SAPPHIRE IV PUMP UPC - DOUBLE	166.6	311.4	50.8	6.56	12.26	2	1.72	3.8	2.54	5.6	•
FA911A145	SAPPHIRE IV PUMP UPC - TRIPLE	191.5	365.7	121	7.54	14.4	4.76	1.45	3.2	3.03	6.7	•
FA910A350	B.BRAUN IV UPC - TRIPLE	254	222	296	10	8.75	11.68	2.81	6.2	4.08	9	V

V = VALIDATION PROCESS FOR AVIATION

AVIATION D.360 SWIVEL SYSTEM

A two-stage mounting solution comprising a device adapter and a D.360 swivel base, with components available separately for use in multiple locations. Once installed, the adapter attached to the medical device slides into the swivel base, locking securely and allowing full 360-degree rotation. A quick-release feature enables the device to be easily removed for use elsewhere.

**CABINET MOUNT
D.360 BASE** FA868A100



**D.360 ADAPTER FOR
MINI TRACK** FA868A175



D.360 ZOLL® ADAPTER
FA868A151



**D.360 UNIVERSAL
RECEIVER MOUNT
HAMILTON® T1**
(MOUNT ONLY) FA858A110



**LIFEPAK® 35 D.360
ADAPTER**
(MOUNT ONLY) FA917A800

Seamlessly blends with the device, allowing full use of the rear OEM kickstand and pouches when desired. Tested to FAR Airworthiness Standards and SAE J3043



**ZOLL® ZENIX® Z.360
ADAPTER**
(MOUNT ONLY) FA917A752

Replaces the factory plastic base, containing the device seamlessly without additional interfaces. Compatible with D.360 and A.360 Swivel bases.

- FA917A751 - ZENIX® UPC is compatible with all Ferno equipment pole systems

Tested to FAR Airworthiness Standards and SAE J3043



**TEMPUS® D.360
ADAPTER**
(MOUNT ONLY) FA911A975
Tested to SAE J3043



SPECIFICATIONS

PART #	PRODUCT	METRIC (MM)			IMPERIAL (IN)			WEIGHT		LOAD CAPACITY		TEST-ED
		L	W	D	L	W	D	KG	LB	KG	LB	
FA868A100	CABINET MOUNT D.360 BASE	192	38	180	7.55	1.49	7.08	1	2.2	12	26.45	•
FA868A175	D.360 ZOLL ADAPTER FOR MINI TRACK	192	38	162	7.55	1.49	6.37	0.45	0.99	12	26.45	•
FA868A151	D.360 ZOLL ADAPTER	180	40	115	7.08	1.57	4.52	0.45	0.99	WEIGHT OF DEVICE		•
FA858A110	D.360 UNIVERSAL RECEIVER MOUNT HAMILTON T1	195.58	208.28	266.7	7.7	8.2	10.5	1.35	2.98	4.4	9.7	26.G
FA917A800	LIFEPAK 35 D.360 ADAPTER	291.8	361.6	134.7	11.49	14.23	5.31	1.13	2.5	WEIGHT OF DEVICE		•
FA917A752	ZOLL ZENIX® Z.360 ADAPTER	27.1	232.9	173.4	1.07	9.17	6.83	0.48	1.85	WEIGHT OF DEVICE		•
FA917A751	ZOLL ZENIX UPC	27.1	232.9	254	1.07	9.17	10	1.04	2.31			
FA911A975	TEMPUS D.360 ADAPTER	89.6	305.5	132.3	3.53	12.03	5.21	1.36	3			26.G

iNTRAXX™

USE CASES

This section showcases real-world examples of how the iNTRAXX system is used by emergency and healthcare services around the world.

From road and aeromedical platforms to specialist environments, these applications highlight the versatility, adaptability, and global relevance of iNTRAXX in supporting patient care across diverse operational settings.

USA | AMBUS MULTI-PATIENT EVACUATION

Acadian Ambulance Service operates one of the largest EMS networks in the United States, with more than 3,000 medics across Louisiana, Mississippi, Tennessee, and Texas.

To support large-scale evacuations and disaster response, Acadian commissioned two multi-patient evacuation vehicles (AMBUS) capable of transporting up to 20 patients at a time.

Each AMBUS is equipped with iNTRAXX™ tracks, litter arms, and mounts, allowing patients to be quickly and securely positioned vertically and organized according to medical priority.

The vehicles have been deployed for hurricane evacuations, COVID-19 transports, and flood response operations, including missions where more than 200 patients were evacuated in under two days.

“

The System has been an EMS game-changer for us.

J THIBODEAUX, REGIONAL AMBUS PROGRAM DIRECTOR

”



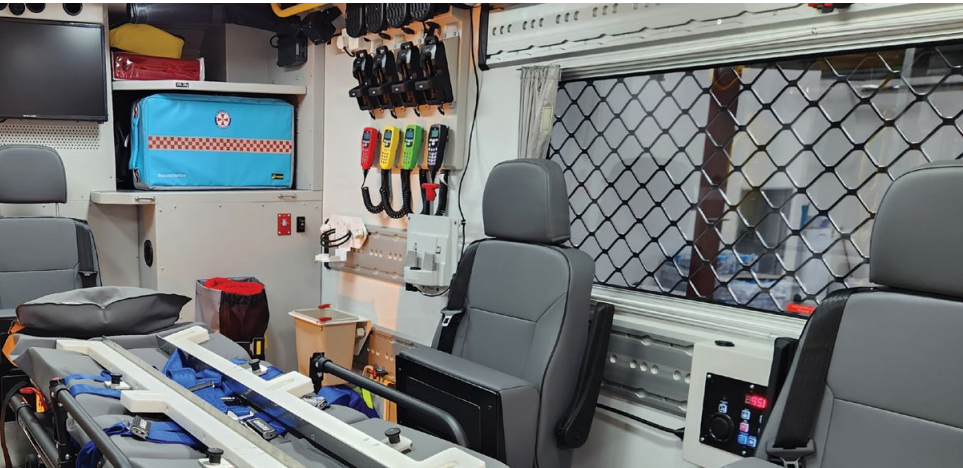
AUSTRALIA | HAZARDOUS AREA RESCUE AMBULANCE (HARA)



New South Wales Ambulance selected iNTRAXX for its new fleet of eight Hazardous Area Rescue Ambulances to ensure medical equipment remains secure during extreme off-road operations.

Built on Mercedes-Benz Unimog platforms, the HARA vehicles operate in disaster environments such as bushfires and floods, often across rough and unpredictable terrain. In these conditions, preventing equipment from moving or becoming unsafe was critical. iNTRAXX tracks and equipment mounts were chosen for their ability to **securely restrain equipment** during bumpy missions, reducing risk to patients and paramedics.

Equally important was iNTRAXX's **modular and adaptable design**, allowing equipment layouts to be easily reconfigured to meet changing operational needs. iNTRAXX has proven to be an ideal solution for equipment and patient safety across the hundreds of missions these vehicles have already been deployed to in some of Australia's most challenging rescue environments.



USA | OAK VALLEY HOSPITAL DISTRICT AMBULANCE



Based in Oakdale, California, Oak Valley Hospital District Ambulance is a hospital-based ambulance service delivering medical care to the surrounding rural communities.

To enhance efficiency and safety, Oak Valley commissioned two Type II (van-style) ambulances equipped with the iNTRAXX system. Fully 26G crash-tested, iNTRAXX enables secure, highly organized transport of equipment and consumables within a compact footprint.

The system's space-efficient modular design allowed the service to transition from larger box-style ambulances to more agile van-chassis Type II vehicles, while maintaining capability.

In addition, iNTRAXX's clearly defined and visible storage support LEAN principles, helping Oak Valley achieve improved inventory control, reduce over-stocking, and delivering ongoing cost savings without compromising readiness or performance.



SINGAPORE | MARINE RESCUE VESSEL MEDICAL STORAGE



Singapore's next-generation marine rescue vessel, Blue Dolphin, was designed to support major fire, rescue, and hazardous materials incidents in increasingly congested regional waters.

Equipped to operate as a command post and accommodate up to 30 seated casualties, the vessel's onboard treatment bays use iNTRAXX to enable rapid, organized medical response. iNTRAXX tracks, paired with iNCASE bags and SafePouches, provide a secure, adaptable solution for storing medical equipment and consumables in a demanding maritime environment.

The 26G crash-tested system ensures storage and equipment remain securely mounted during high speeds and rough seas. SafePouches protect supplies from the marine environment while supporting quick identification, efficient restocking, and optimized clinical workflows within confined treatment spaces.

Equipment placement can be optimized to support clinical workflows while maintaining clear pathways for crew movement and casualty handling which are essential requisites in confined maritime spaces.



NORWAY | FLEXIPOD RAPID DEPLOYMENT CLINIC



The FLEXIPOD Clinic is a rapidly deployable, fully operational medical facility designed to support life-saving interventions in high-risk environments.

Developed through close collaboration between PODTOWN and Ferno Norden Military Systems, in consultation with experienced Medical Officers and Combat Medical Technicians, FLEXIPOD was purpose-built to meet the urgent demands of front-line care.

Housed within a standard 20' ISO container with ballistic protection, the FLEXIPOD Clinic enables forward surgical care in conflict zones, helping to significantly reduce the time from injury to surgical intervention.

To support safe, efficient clinical operations in such demanding conditions, the clinic is equipped with the iNTRAXX™ Integrated Component System.

iNTRAXX wall-mounted tracks and mounts, all 10G/26G crash-tested, securely restrain medical equipment, supply bags, cabinets, and accessories during transport and operation.

NATO stretchers are connected directly to the track system using iNTRAXX Litter Arms, allowing up to four stretchers per FLEXIPOD, positioned at multiple height levels to support effective clinical workflows. When not in use, the litter arms fold flat against the wall to maximize available space.

Chosen for its space-saving modularity, iNTRAXX allows rapid reconfiguration of equipment and supplies to suit different operational roles and mission requirements. The result is a highly adaptable, secure, and organized treatment environment that supports critical care delivery where it is needed most.



READY REFERENCE | EQUIPMENT MOUNTS

The Equipment Mount Ready Reference provides a concise overview of the iNTRAXX mounting options available for a specific medical device, summarizing each mount and indicating the application it enables such as a bench, wall, D.360 or pole mounting.

DEFIBRILLATORS MOUNTS

DEVICES	MOUNT	CRASH TESTING			WHERE THE DEVICE WILL BE MOUNTED							ADDITIONAL REQUIREMENTS
		10G	22G	26G	BENCH	WALL	AVIATION D.360	AVIATION POLE UPC	AVIATION PRO V	TRACK CONNECTOR	STANDARD PACRAC+	
ZOLL X OR ADVANCE	0480019	•	•	•		•						
	0480020	•	•	•	•						•	
	0480021	•	•	•	•	•					•	
	0480297	•	•	•	•	•						
	FA868A151		20G		•		•					
	FA821A330		20G					•				
	FA908A885	•	•	•	•		•					
	0480197	•	•	•		•						
	0480217	•	•	•		•						DIRECT ONLY
ZOLL AED 3	0480149	•	•	•		•						
	0480150	•	•	•		•			•			
ZOLL AED PLUS	0480239	•	•	•		•						0480149 / 0480150
	0480241	•	•	•		•						
	0480242	•	•	•		•						
LIFEPAK 15	0480013	•	•	•		•						
	0480014	•	•	•	•						•	
	0480015	•	•	•	•	•					•	
	0480298	•	•	•	•	•						DIRECT ONLY
PHYSIO LP100 AED	0480084	•	•	•		•						
CORPULS	0480056	•	•	•		•						DOCKING STATION
	0480094	•	•	•	•						•	DOCKING STATION
	0480095	•	•	•	•	•						DOCKING STATION
CORPULS MONITOR	0480093	•	•	•	•	•						
TEMPUS PRO	0480180	•	•	•		•						
	0480182	•	•	•	•						•	
	FM400A111	•	•	•				•				
	FM403A200	•	•	•		•			•			AVIATION MINI TRACK
TEMPUS LS	0480181	•	•	•		•						
	0480182	•	•	•	•						•	
TEMPUS LS & PRO (STACKED)	0480182 + 0480183	•	•	•	•						•	

CONTINUED NEXT PAGE

DEFIBRILLATORS MOUNTS

DEVICES	MOUNT	CRASH TESTING			WHERE THE DEVICE WILL BE MOUNTED							ADDITIONAL REQUIREMENTS	
		10G	22G	26G	BENCH	WALL	AVIATION D.360	AVIATION POLE UPC	AVIATION PRO V	TRACK CONNECTOR	STANDARD PACRAC+		
TEMPUS LS & PRO	0480182	•	•	•	•								
	0480218	•	•	•	•	•						•	
MINDRAY N1	0480203	•	•	•	•	•	•	•	•	•	•	•	DOCKING STATION
MINDRAY BENE-HEART D1	0480239	•	•	•		•							0480149 / 0480150
SCHILLER DEFIBGARD T7	0480224	•	•	•		•							DOCKING STATION
WEINMANN BASE 1NG	0480199	•	•	•		•							

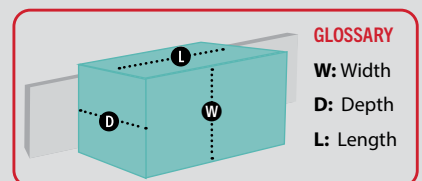
SUCTION MOUNTS

DEVICES	MOUNT	CRASH TESTING			WHERE THE DEVICE WILL BE MOUNTED							ADDITIONAL REQUIREMENTS	
		10G	22G	26G	BENCH	WALL	AVIATION D.360	AVIATION POLE UPC	AVIATION PRO V	TRACK CONNECTOR	STANDARD PACRAC+		
LAERDAL LCSU	0480042	•	•	•		•							
LAERDAL LCSU4	0480048	•	•	•	•	•						•	DOCKING STATION
	FA905A850	•	•	•				•					
	FA905A850	•	•	•		•			•				AVIATION MINI TRACK
SSCOR	0480043	•	•	•		•							
HERSILL V7 PLUS B	0480124	•	•	•		•							DOCKING STATION
SAM E.P.S.	0480169	•	•	•		•						•	TRACK CONNECTOR
ASKIR 30	0480223	•	•	•	•	•						•	TRACK CONNECTOR
	0480233	•	•	•		•							
ASKIR 36BR	0480223	•	•	•	•	•						•	TRACK CONNECTOR
	0480233	•	•	•		•							
WEINMANN ACCUVAC	0480199	•	•	•		•							

VENTILATOR MOUNTS

DEVICES	MOUNT	CRASH TESTING			WHERE THE DEVICE WILL BE MOUNTED							ADDITIONAL REQUIREMENTS	
		10G	22G	26G	BENCH	WALL	AVIATION D.360	AVIATION POLE UPC	AVIATION PRO V	TRACK CONNECTOR	STANDARD PACRAC+		
HAMILTON T1	0480139	•	•	•		•							DOCKING STATION
	FA909A110	V				•			•				
IMPACT 731	0480038	•	•	•		•							
ZOLL Z	0480038	•	•	•		•							
MEDUMAT STANDARD 2 / MEDU-VENT	0480231	•	•	•					•				DOCKING STATION
	0480230	•	•	•	•	•	•	•	•	•	•	•	DOCKING STATION
WEINMANN LIFE-BASE 3NG	0480159	•	•	•		•							DOCKING STATION
DRÄGER OXYLOG 3000	0480110	•	•	•	•								
	0480109	•	•	•		•							
PNEUPAC	0480074	•	•	•		•							
WEINMANN BASE 1NG	0480199	•	•	•		•							

All dimensions provided in the specification tables follow the length, width, and depth definitions shown in the diagram.





GLOBAL HEADQUARTERS

FERNO GROUP Inc.

70 Weil Way, Wilmington, OH 45177, USA

T: +1 877 733 0911

E: info@ferno.com

W: www.ferno.com

UNITED KINGDOM

FERNO UK

Stubs Beck Lane, Cleckheaton,
West Yorkshire, BD19 4TZ, UK

T: +44 (0) 1274 851999

E: sales.uk@ferno.com

W: www.ferno.com

ITALY

FERNO Italia SRL

Via Benedetto Zallone, 6,
40066 Pieve di Cento BO, Italy

T: +39 051 686 0028

E: sales.it@ferno.com

W: www.ferno.it

SLOVAKIA

FERNO Slovakia s.r.o.

Bošáca 893, 913 07 Slovakia

T: +421 (0) 32 7708 010

E: sales.sk@ferno.com

W: www.fernosk.sk

MIDDLE EAST

FERNO Wilmington Inc. (Branch)

5EA 118-01 First Floor

5 East A, Dubai, U.A.E.

T: +61 403 383 046

E: SalesME@ferno.com

CANADA

FERNO Canada

2715 Bristol Circle #2

Oakville, Ontario L6H 6X5, Canada

T: +1 800 543 3766

E: info.ca@ferno.com

W: www.ferno.ca

AUSTRALIA

FERNO Australia

11 Johnstone Road,

Brendale, Queensland 4500, Australia

T: +61 3881 4999

E: info.au@ferno.com

W: www.ferno.com.au

JAPAN

FERNO Japan Inc.

528-1 Shimoyugi, Hachioji-shi,

Tokyo 192-0372, Japan

T: +81 3 5820 4669

E: info@ferno-jp.com

W: www.ferno-jp.com

WWW.FERNO.COM



AUTHORIZED DISTRIBUTOR

